

Date		Type	
Projet			
Emplacement			
Modèle#		Quantité	
Spécificateur			

BRUSH 35

DESIGNER : PIERRE CHARRIÉ

YEAR : 2023

ORIGIN : FRANCE AND ITALY
2 YEARS WARRANTY

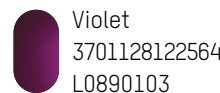
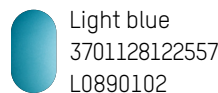
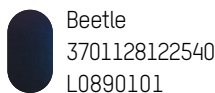
MATERIAL : ALUMINIUM, STEEL

The Brush collection was born during a workshop in Vietnam with the company Hanoia when designer Pierre Charrié explored the world of lacquered objects. A craft that requires using colour as an essential element of an object, finding its relationship with space and volume. A level of sophistication through which colours take shape in three dimensions as they run from

the top to the bottom of the lamp. The final shape comes from using an artisanal technique known as metal spinning, for absolute mastery over the rounded oblong form that combines the geometric and the organic.

MAIN SPECIFICATIONS

COLOUR EAN REFERENCE



PHYSICAL

MEASURES

Diameter

35,0 cm / 13,8 inches

Height

15,0 cm / 5,9 inches

Weight

1,9 kg / 4,2 lbs

PARCEL LOGISTICS

Box 1/1

36,5 x 36,5 x 22,5 cm
14,4 x 14,4 x 8,9 inches
2,8 kg
6,2 lbs

ELECTRICAL

Source type

Bulb

Replaceable source

Yes

Socket

E27

Watt

60W max

Recommended bulb

2700K, about 1500lm
H max 11,0 cm /
4,3 inches

Cable length

300,0 cm
118,1 inches

Environment

Indoor

Cable colour

White

Canopy size

Ø9,5 x 3,0 cm
Ø3,7 x 1,2 inches

Canopy included

Yes

Canopy material

Steel

Canopy shape

Circular

Light source

Excluded

Canopy colour

White

Switch

No

Dimmable

Yes, depending on
bulb

Frequency

50-60Hz

Category

Pendant lamp

Voltage

220 - 240V-

