

# MSD 60W LED CONSTANT VOLTAGE DRIVER

Bright Star 明仕达

TRIAC Dimmable

5%  100%  
Triac dimmable



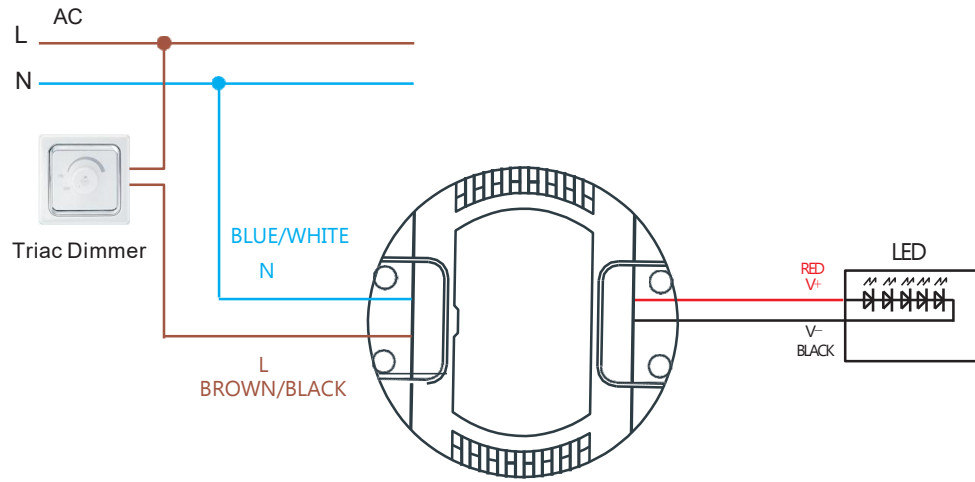
## Product Features

产品特性

- Complete isolation design for safer use  
驱动采用全隔离设计使用更安全
- Excellent dimming effect&strong compatibility  
调光效果卓越,兼容性较强
- Fire retardant&high temperature resistant PC plastic housing  
防火阻燃,耐高温PC塑料外壳
- Multiple protections like short circuit&over-current &over-voltage protection.  
多重保护短路、过流和过压保护
- Global certifications optional like ETL, SAA, CB, CE  
符合全球多国认证可选(ETL, SAA, CB, CE)
- Applied to indoor/office lighting&decoration lighting &commercial lighting&home lighting  
应用于室内办公照明、装饰照明、商照照明、家居照明
- High efficiency&long lifespan&5 years warranty  
高效率,长寿命,质保5年
- Power Supplies with extra-low voltage class 2 outputs,IP20  
Class 2特低压电源, IP20
- Adopt active power factor correction design with high power factor  
采用主动式功率因数校正设计,高功率因数

Model Number		MSD-PV060	MSD-PV060
OUTPUT 输出	VOLTAGE RANGE/输出电压	12VDC	24VDC
	RATED CURRENT/输出电流	4.5A Max	2.5A Max
	RATED POWER/输出功率	54W	60W
	RIPPLE & NOISE (max.)纹波电压(峰-峰值)	2.1V(Vp-p)	3.1V(Vp-p)
	VOLTAGE ACCURACY/电压精度	±2.0%	±2.0%
	LINE REGULATION/线性调整率	±1.0%	±1.0%
	LOAD REGULATION/负载调整率	±1.0%	±1.0%
	SETUP TIME/启动时间	800ms/115VAC & 400ms/ 230VAC at full load	
INPUT 输入	VOLTAGE RANGE/输入电压	100 ~ 130VAC & 200 ~ 240VDC	
	FREQUENCY RANGE/工作频率	60Hz/50Hz	
	Efficiency Up To/最高效率	85.7%/115VAC & 86.5%/230VAC	88%/115VAC & 89%/230VAC
	AC CURRENT (Typ.)/输入电流	0.7A Max/115VAC & 0.36A Max/230VAC	
	PF(Full Load)/功率因数(满载)	0.98/115VAC & 0.97/230VAC	0.98/115VAC & 0.97/230VAC
	INRUSH CURRENT(Typ.)/浪涌电流	COLD START 40A(twidth=540µs measured at 50% Ipeak) at 230VAC	
	Prower In No-load Operation/空载功耗	0.5W Max/115VAC & 1W Max/230VAC	0.5W Max/115VAC & 0.9W Max/230VAC
	Dimming Protocol/调光方式	Leading edge&Lagging edge(ELV)	
	Dimming Range/调光范围	5%-100%	
	THD (Full Load)/总谐波失真(满载)	14.3%/115VAC 18.1%/230VAC	14.2%/115VAC 18.8%/230VAC
ENVIRONMENT 环境	WORKING TEMP./工作温度	-30 ~ +50℃ (Refer to "Derating Curve")	
	WORKING HUMIDITY/工作湿度	20 ~ 90% RH non-condensing	
	STORAGE TEMP., HUMIDITY/存储温度, 湿度	-40 ~ +80℃, 10 ~ 95% RH	
	TEMP. COEFFICIENT/温度系数	±0.03%/℃ (0 ~ 50℃)	
	VIBRATION/震动测试	10 ~ 500Hz, 2G 10min./1cycle, period for 60min. each along X, Y, Z axes	
SAFETY&EMC 安规/EMC	SAFETY STANDARDS/安规标准	UL 1310 ,CSA C22.2#223,EN 61347-1,EN 61347-2-13,EN 62493,AS/NZS 61347.1	
	WITHSTAND VOLTAGE/绝缘耐压	I/P-O/P:3.75KVAC	
	ISOLATION RESISTANCE/绝缘电阻	I/P-O/P:>100M Ohms / 500VDC / 25℃/ 70% RH	
	EMC EMISSION/EMC辐射骚扰	Fcc Part 15 Subpart B,EN 55015:2013+A1,EN 61547:2009	
	EMC IMMUNITY/EMC抗干扰	EN IEC 61000-3-2:2019,EN 61000-3-3:2013	
OTHER 其它	DIMENSION/尺寸	Φ102 * 31mm (D*H)	
	PACKING/包装	0.25Kg: 36pcs/Inner white box packing	

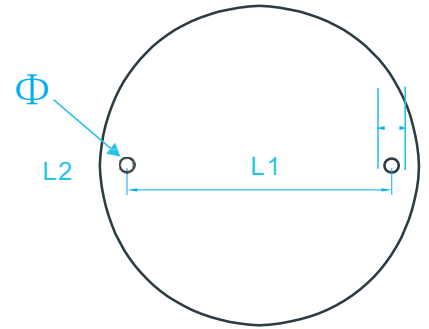
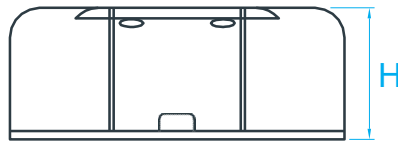
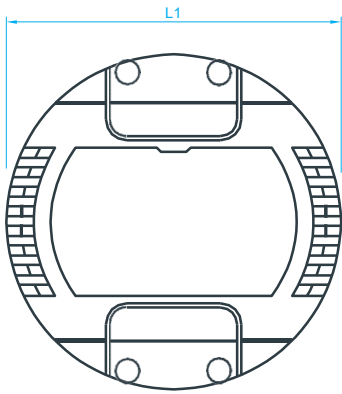
## Wiring diagram/接线图



Units:mm

MSD-PV060			
Overall Size	Length	L1	102
	Width		
	Height	H	31
Installation Size	vertical spacing	L2	89
	lateral spacing	W2	
	mounting aperture	$\Phi$	3

## Shell structure/安装图



Units: mm

## Test curve/测试曲线

