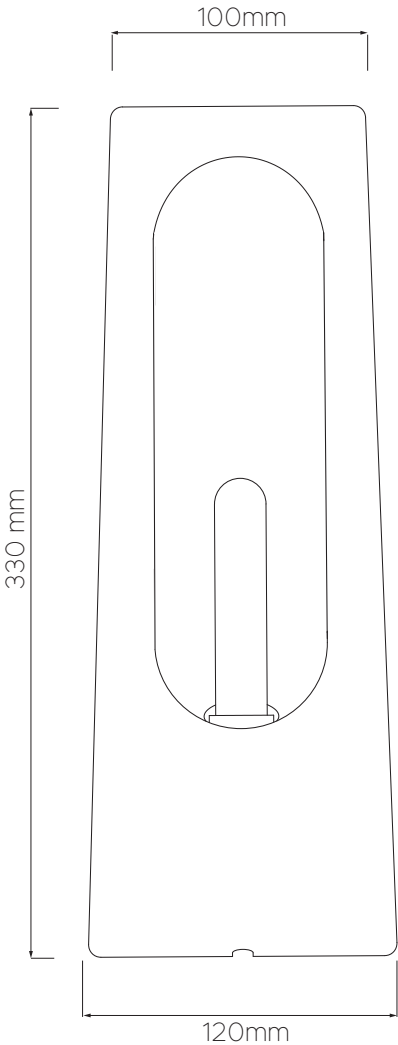
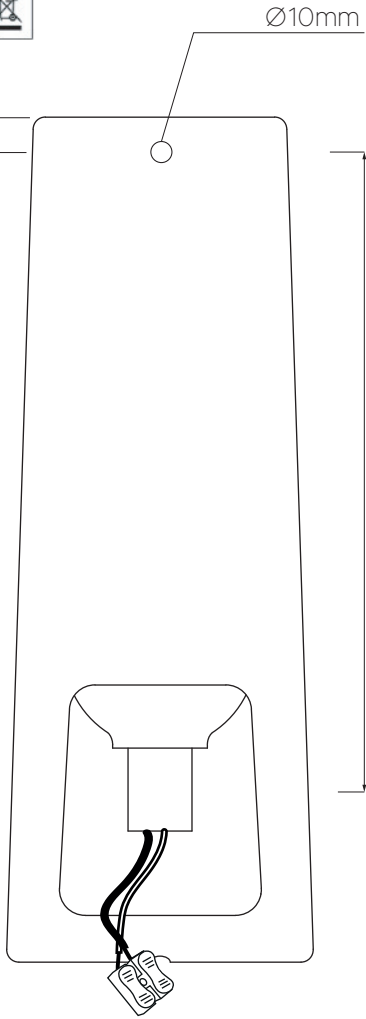
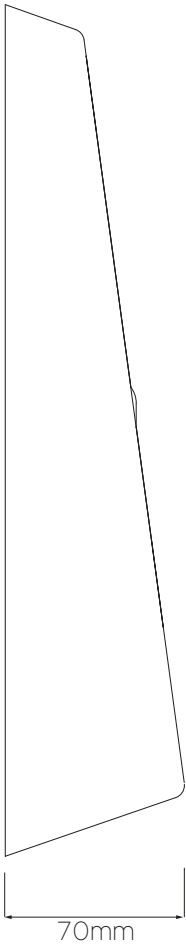
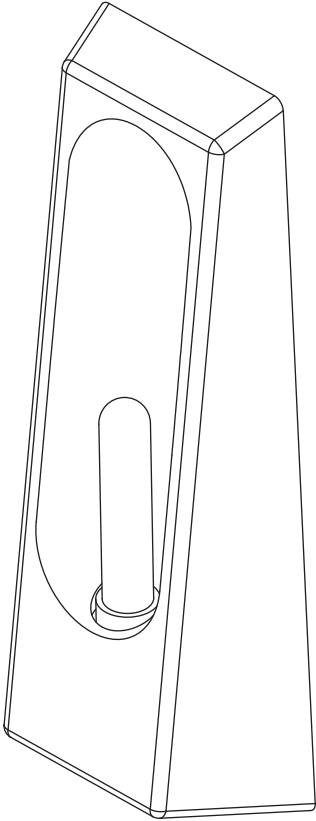


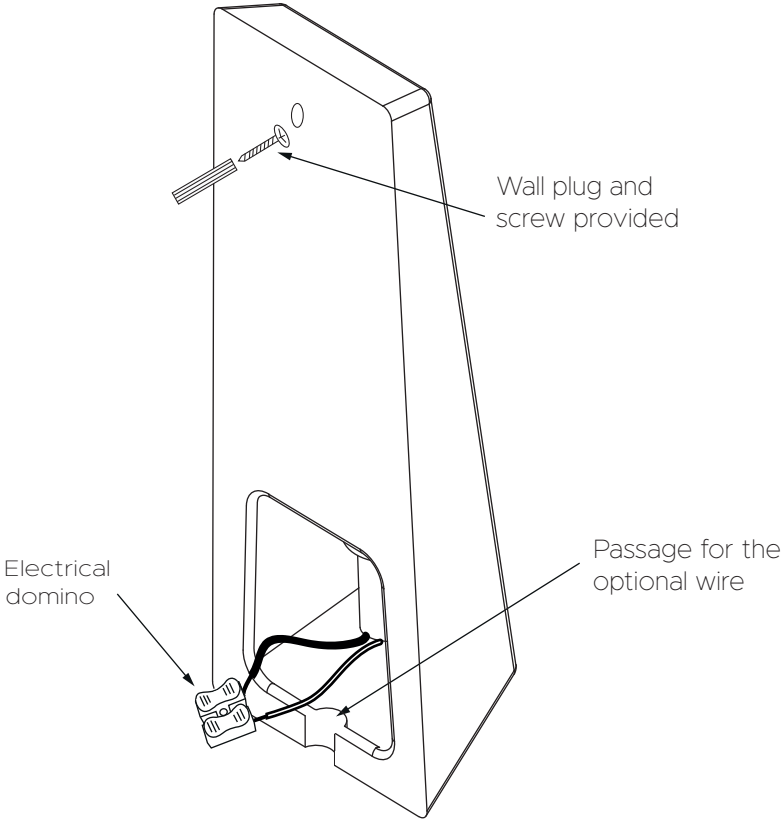
COREP FC2E14 E14 8W LED MAX.
220-240V~50Hz



Front



Back



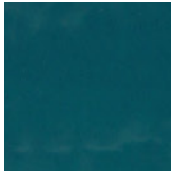
**POSSIBLE
FINISHES:**



FACETTE



CARMIN



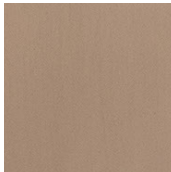
MARIN



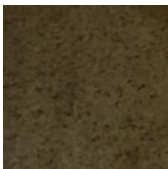
OURO



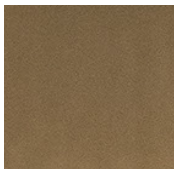
TERRA



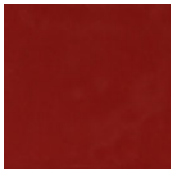
SABLE



BRONZE



TILLEUL



TINTO



PORTO



TERRA
BRANCO



VERDE



**TECHNICAL
SPECIFICATIONS:**

Material: Ceramic

Dimensions:

Height: 33cm
Width: 12cm
Depth: 7cm

Weight: 1 kg

**ELECTRICAL
COMPONENTS:**

Socket: E14

Bulb: Provided bulb

LED: Power 1W

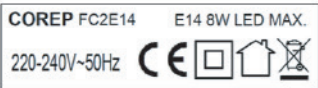
Voltage: 220 - 240V

**LIGHTING
SPECIFICATIONS:**

Lumens: 120 lm

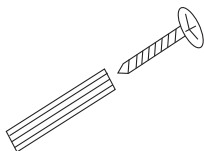
Temperature: 2700K

Rated life: 25.000 hours



HARDWIRED VERSION:

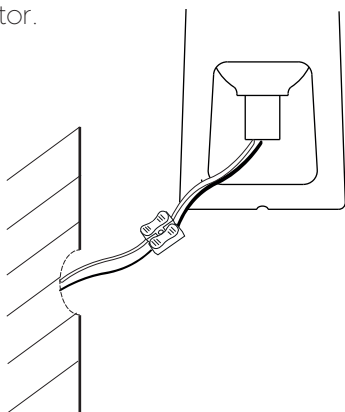
1 - Fix the provided plug and screw on the wall 25cm above your electrical outlet.



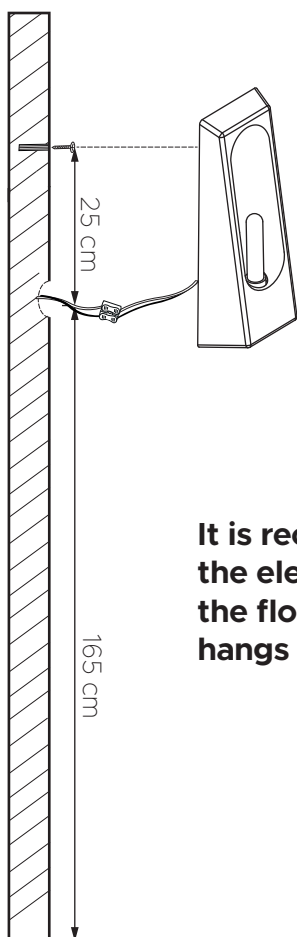
2 - Identify the electrical wires from your wall.

3 - Strip about 6 mm of insulation from the wire ends.

4 - Take the wire from the wall and insert them into the corresponding slots in the domino connector.



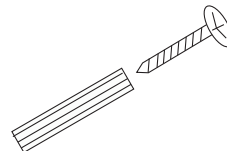
5 - Mount the sconce to the wall.



It is recommended to place the electrical outlet 165 cm from the floor so that the appliance hangs at the appropriate height.

PLUG IN VERSION:

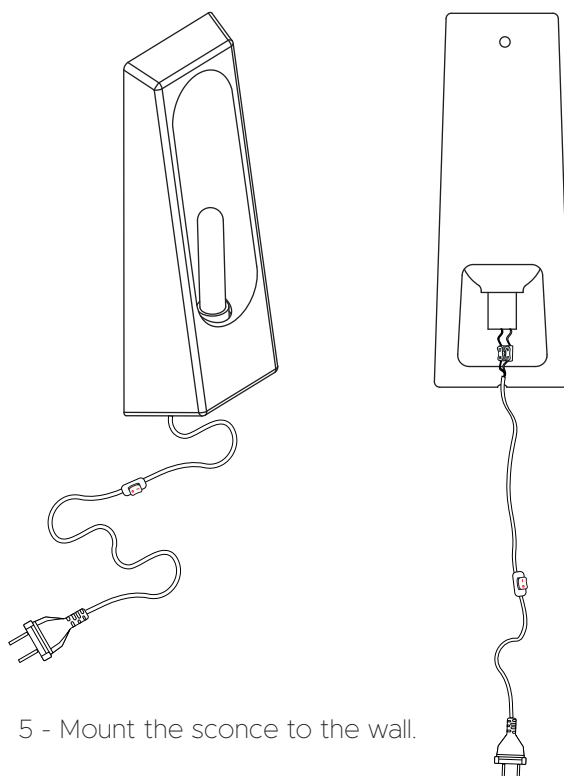
1 - Fix the provided plug and screw on the wall.



2 - Identify the electrical wires from the provided cord.

3 - Strip about 6 mm of insulation from the wire ends.

4 - Take the wire from the cord and the corresponding wire from the lamp. Insert them into the corresponding slots in the domino connector.



5 - Mount the sconce to the wall.

SAFETY TIPS:

If unsure, consult a qualified electrician.

Avoid exposing connections to humidity.

Always double-check connections before restoring power.