


# FLOS

 F1070075 Brick Red

## Bellhop Floor

Designed by Edward Barber and Jay Osgerby, 2020

26W - 1023lm - 2700K - CRI> 90

Floor lamp with indirect light. Stem in painted aluminium: shiny white, brick, cioko, green. Reflector in shiny opal white and grey blown glass. Electrical cable of 270 cm usable length with foot dimmer switch for ON/OFF function and brightness adjustment 10–100%. Power supply with interchangeable plugs.



Are you a professional and your project needs consulting and support?

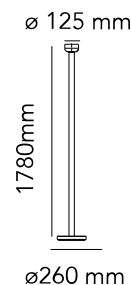
BOOK AN APPOINTMENT

### Main specifications


EAN	8059607039717
Mounting	Floor
Environments	Indoor dry location
Light source type	LED
Light sources included	Yes
LED type	LED array
Power (W)	26
System power (W)	26
System flux (lm)	1023

### Physical

Colour	Brick Red
Length (mm)	260
Cord length (mm)	2700
Net weight (kg)	9.82
Package volume (m3)	0.05
IP internal	20



### Download

Mounting instructions  PDF

Mounting instructions  PDF

### Photometric Files

LDT / IES  LDT

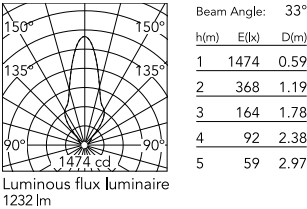
### Technical Drawings

3D  ZIP

 Bim  ZIP



Schematic light drawing



Photometric

Lighting type	Indirect
Light distribution	Roto symmetric
CCT (K)	2700
CRI>	90
Extreme cut off	No

Electrical

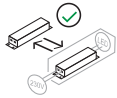
Insulation class	III
Frequency (Hz)	50/60
Main voltage (Vac)	100-240
LED current (mA)	700
Power supply	Remote included
Dimmable	Yes
Power supply type	Electronic 48V
Dimming interface	Switch Integrated (Remote Dimmable)
Plug type	Type G, Type A, Type C
Batteries inside	No

Ecodesign and Energy Labelling

This product contains a light source of energy efficiency class **G**

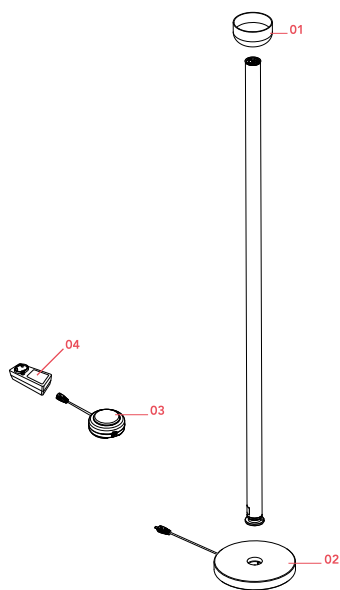


Replaceable (LED only) light source by a professional



Replaceable control gear by an end-user

Spare Parts

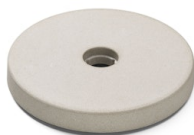


01.	Bellhop F Reflector White	F1073009
02.	Bellhop F Base Concrete	F1072009
03.	Switch Dimmer Assembly 700mA	RF30216
04.	Black plug assembly kit & 48V driver	RF6600130



F1073009

Bellhop F Reflector White



F1072009

Bellhop F Base Concrete



RF30216

Switch Dimmer Assembly 700mA



RF6600130

Black plug assembly kit & 48V driver