



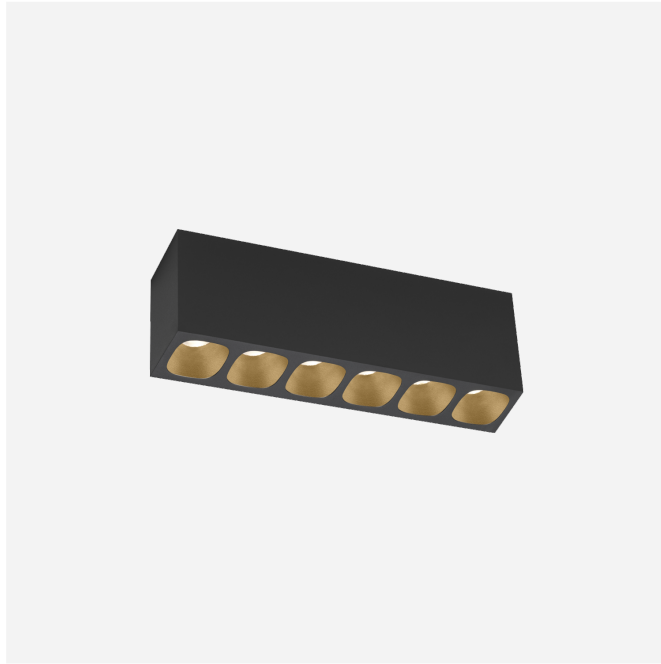
PROJECT

TYPE

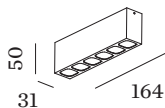
NOTES

QUANTITY

DATE



Rectangular ceiling surface mounted downlight made from die-cast aluminium; surface Black Matt + Champagne; with COB (Chip on Board) technology for maximum efficiency; phase-cut dim; light colour 3000 K; binning initial MacAdam ≤ 3 SDCM; CRI ≥ 90 ; beam angle 28°; degree of protection IP20; Class 1; UGR ≤ 13 ; driver included; light source replaceable by Wever & Ducré or by a professional with explicit authorization; control gear replaceable by end-user;



GENERAL

Ceiling
Surface
Black Matt + Champagne
IP20
Interior
1000 lm
CIE flux code: 98 100 100 100 100

LED

3000 K
CRI ≥ 90
L80 / 50000h
initial MacAdam ≤ 3 SDCM

OPTICAL

Standard
beam angle 28°

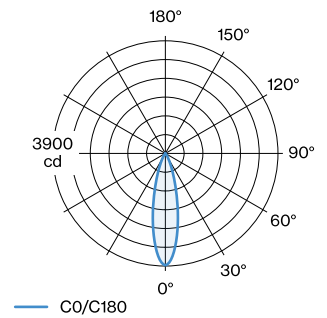
ELECTRICAL

phase-cut dim
220 - 240 V
system 13.4 W
Class 1

PHYSICAL

length 164 mm
width 31 mm
height 50 mm
0.21 kg

LIGHT DISTRIBUTION



**CONE DIAGRAM**

standard 25°

h (m)	E0° (lx)	ø (m)
1	3880	0.45
2	970	0.90
3	430	1.35
4	240	1.81
5	160	2.26