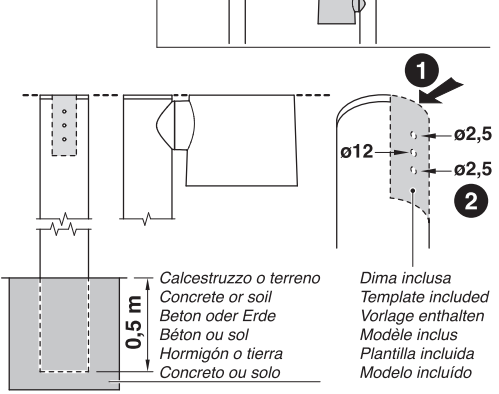
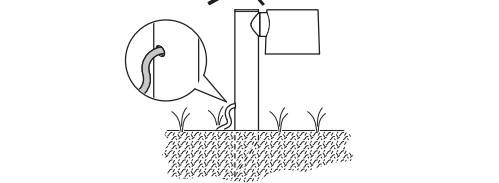


**CLIC POST  
CLIC POST UP**  
ø40 - ø60

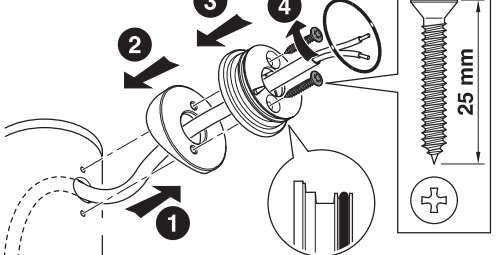


**CLIC GARDEN  
CLIC GARDEN UP**

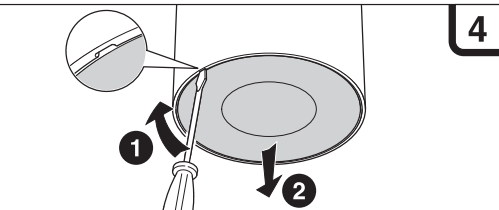


**CLIC POST  
CLIC POST UP**  
ø40 - ø60

**CLIC GARDEN  
CLIC GARDEN UP**



**Eseguire il cablaggio elettrico come al punto 3b.**  
**Carry out the electrical wiring as in point 3b.**  
**Führen Sie die elektrische Verkabelung wie in Punkt 3b aus.**  
**Réaliser le câblage électrique comme au point 3b.**  
**Realizar el cableado eléctrico como en el punto 3b.**  
**Efectuar a cablagem eléctrica como indicado no ponto 3b.**



**I ATTENZIONE!** La sicurezza dell'apparecchio è garantita solo con l'uso appropriato delle seguenti istruzioni, pertanto è necessario conservarle. La manutenzione e l'installazione devono essere eseguite solo dopo aver disinserito l'energia elettrica. Durante le fasi d'installazione evitare in qualsiasi caso l'utilizzo di sostanze lubrificanti quali oli, grassi o loro derivati; tali sostanze a contatto con le parti plastiche potrebbero causarne la rottura.

L'apparecchio non deve, in alcuna circostanza, essere coperto con materiale isolante o similari. Il diffusore pulito garantisce il rendimento ottimale dell'apparecchio. Consigliamo una pulizia periodica utilizzando, per i diffusori in materiale termoplastico, detergenti neutri privi di silicone e suoi derivati.

Sorgente luminosa sostituibile dall'utilizzatore finale:  
GU10 max 7W altezza massima totale 57mm.

LOMBARDO S.r.l. non risponde di danni a cose e persone imputabili a modifiche, manomissioni o impiego non conforme alle caratteristiche tecniche del prodotto.

Apparecchio totalmente protetto contro la polvere: IP 6X  
Apparecchio protetto contro i getti d'acqua: IP X5  
Classe II.

**UK CAUTION!** The safety of the light fitting is only guaranteed if the instructions are followed carefully and they must be kept for future reference. Maintenance and installation procedures must only be carried out when the mains have been switched off. During installation, avoid all use of lubricants such as oil, grease or any derivatives; such substances may cause damage to the plastic parts when in contact with them.

The light fitting must never, under any circumstances, be covered with insulating or similar materials. A clean diffuser guarantees maximum light from the appliance. Periodic cleaning is recommended. For diffusers made of thermoplastic material, use neutral detergents that do not contain silicone or its derivatives.

Light source replaceable by the end user:  
GU10 max 7W, maximum total height 57mm.

LOMBARDO S.r.l. is not liable for damage to property and people due to modification, tampering and use not in conformity with the technical characteristics of the product.

Light fitting totally protected from dust: IP 6X  
Light fitting protected against jets of water: IP X5  
Class II.

**D ACHTUNG!** Die Sicherheit des Gerätes ist nur bei Anwendung der folgenden Anweisungen gewährleistet, die daher aufbewahrt werden müssen. Arbeiten zur Wartung und Installation dürfen nur nach Unterbrechung der Stromzufuhr ausgeführt werden. Während der Installationsphase ist jeglicher Gebrauch von Schmiermitteln wie Öl, Fett und Folgeprodukte zu vermeiden, diese Stoffe können zu Schäden an den Plastikteilen führen. Das Gerät darf nie mit Isoliermaterial oder ähnlichem bedeckt werden. Eine gut gereinigte Abdeckung garantiert eine optimale Leistung des Apparats. Wir empfehlen daher, für Abdeckungen aus thermoplastischem Material eine periodische Reinigung mit neutralen Reinigungsmitteln ohne Silikon oder Silikonderivaten.

Lichtquelle durch den Endverbraucher austauschbar:  
GU10 max 7W, maximale Gesamthöhe 57mm.

LOMBARDO S.r.l. übernimmt keine Verantwortung für Schäden, an Sachen oder Personen, herbeigeführt durch unsachgemäße oder veränderte Handhabung oder Benutzung des Produktes.

Gerät vollständig staubgeschützt: IP 6X  
Gerät Druckwasserstrahl geschützt: IP X5  
Klasse I.

**F ATTENTION!** La sécurité de l'appareil n'est garantie qu'en cas d'emploi approprié des instructions suivantes. Nous vous conseillons donc de bien les conserver. L'entretien et l'installation ne doivent être effectués que lorsque le courant électrique est coupé. Pendant les phases d'installation, éviter l'usage de lubrifiants, comme par exemple huile, gras et dérivés, parce que ces substances pourraient détériorer les parties en plastique. L'appareil ne doit en aucun cas être recouvert par du matériel isolant ou similaire. Un diffuseur bien propre peut garantir un maximum de rendement. Nous vous conseillons donc de nettoyer l'appareil périodiquement à l'aide de détergents neutres sans silicone et dérivés pour les diffuseurs en matière thermoplastique.

Source lumineuse remplaçable par l'utilisateur final :  
GU10 max 7W, hauteur totale maximum 57mm.

LOMBARDO S.r.l. n'est pas responsable des dommages aux biens et aux personnes en raison de modifications, manipulations ou utilisation non conforme aux caractéristiques techniques du produit.

Appareil totalement protégé contre toute infiltration de poussière: IP 6X  
Appareil protégé contre les jets d'eau de toutes directions: IP X5  
Classe II.

**E ¡ATENCIÓN!** La seguridad del aparato está garantizada solamente con el uso apropiado de las siguientes instrucciones, por lo tanto es necesario conservarlas. El mantenimiento y la instalación deben ser efectuados sólo después de haber desconectado la energía eléctrica. Durante las fases de instalación evitar en todos los casos el uso de sustancias lubricantes como aceites, grasas o sus derivados; dichas sustancias en contacto con las partes de plástico podrían causar su rotura.

El aparato no debe, en ningún caso, cubrirse con material aislante o similares. El difusor limpio garantiza un óptimo rendimiento del aparato. Aconsejamos una limpieza periódica utilizando, para los difusores de material termoplástico, detergentes neutros que no contengan siliconas y sus derivados.

Fuente de luz reemplazable por el consumidor final:  
GU10 max 7W, altura total máxima 57mm.

LOMBARDO S.r.l. no se hace responsable por los daños a la propiedad y las personas debido a modificación, manipulación y uso no conforme a las características técnicas del producto.

Aparato con protección total frente al polvo: IP 6X  
Aparato con protección contra chorros de agua: IP X5  
Clase I.

**P ¡ATENÇÃO!** A segurança do aparelho só é garantida se forem cumpridas as seguintes instruções, portanto será necessário conservá-las. A manutenção e a instalação devem ser feitas só após ter desligado a energia elétrica. Durante as fases de instalação evitar, em todo o caso, a utilização de substâncias lubrificantes tais como óleos, gorduras ou derivados; estas substâncias em contacto com as partes plásticas poderão causar a sua ruptura.

O aparelho não deve, de maneira nenhuma, ser coberto com material isolante ou similares. O difusor limpo garante um ótimo rendimento do aparelho. Aconselhamos uma limpeza periódica utilizando, para os difusores de material termoplástico, detergentes neutros sem silicone e derivados.

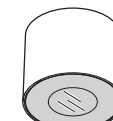
Fonte de luz substituível pelo usuário final:  
GU10 max 7W, altura total máxima 57mm.

LOMBARDO S.r.l. não se responsabiliza por danos materiais e pessoas, devido a modificações, manipulação ou utilização não em conformidade com as especificações do produto.

Aparelho totalmente protegido contra o pó: IP 6X  
Aparelho protegido contra os jactos de água: IP X5  
Classe I.

# Lombardo.

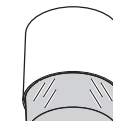
**CLIC**



**CLIC TOP**



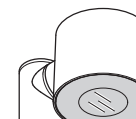
**CLIC WALL**



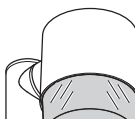
**CLIC TOP UP**



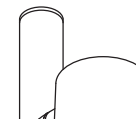
**CLIC WALL UP**



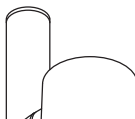
**CLIC GARDEN**



**CLIC GARDEN UP**



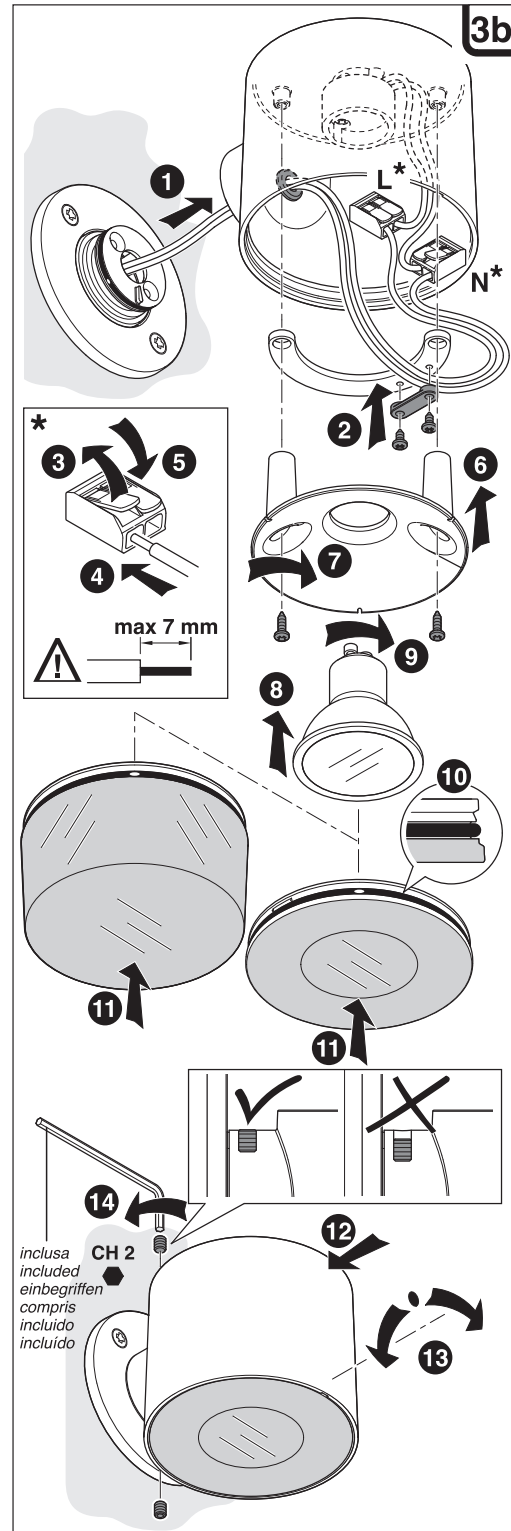
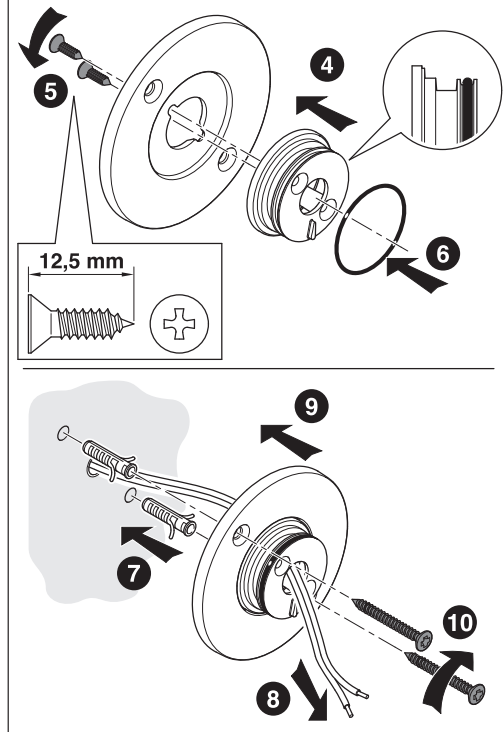
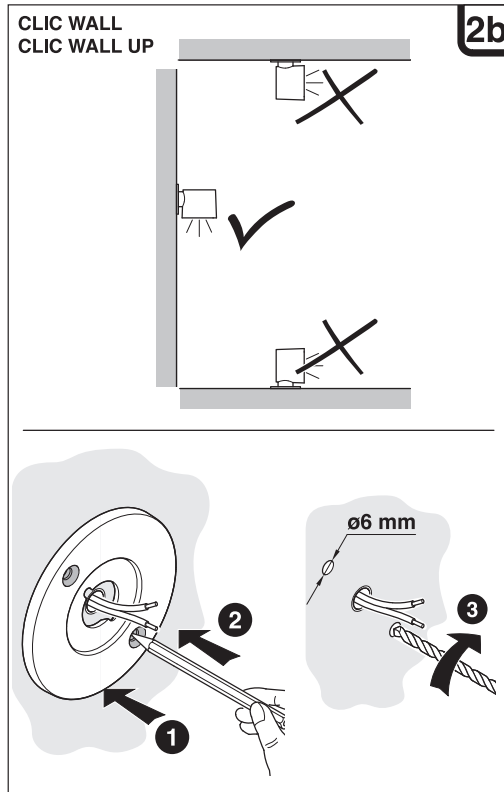
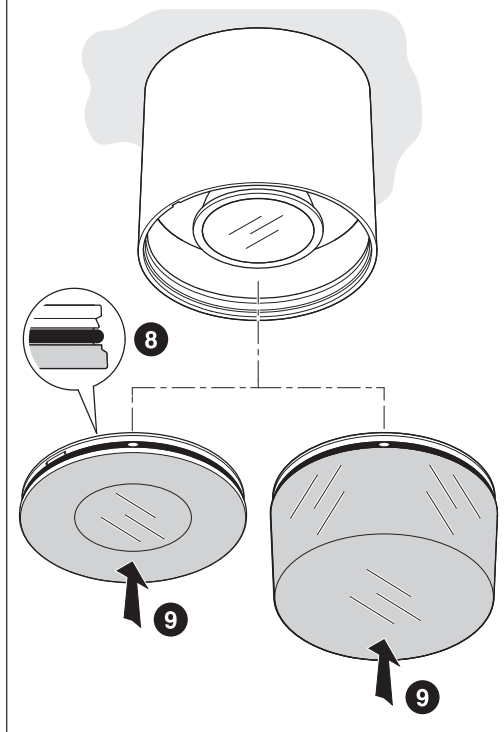
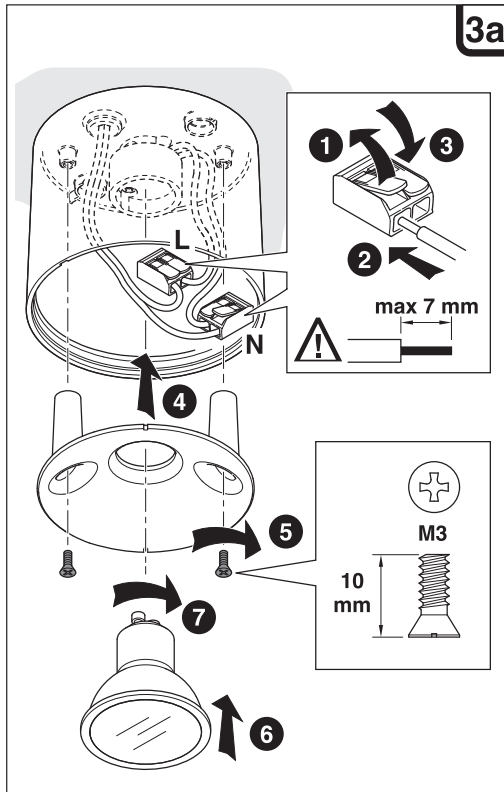
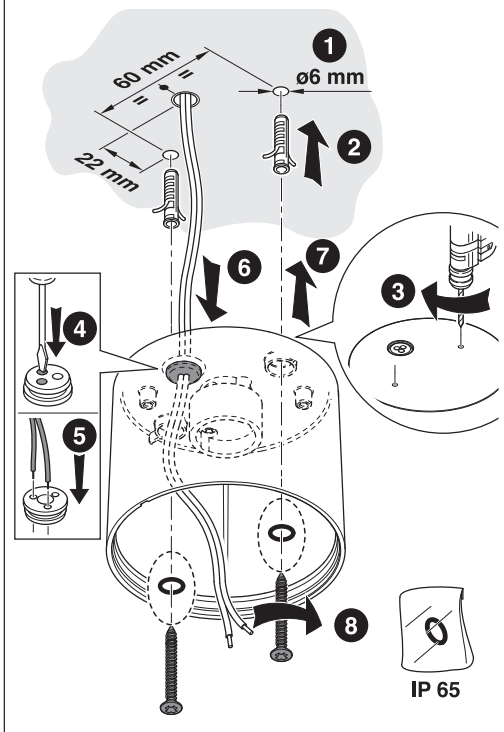
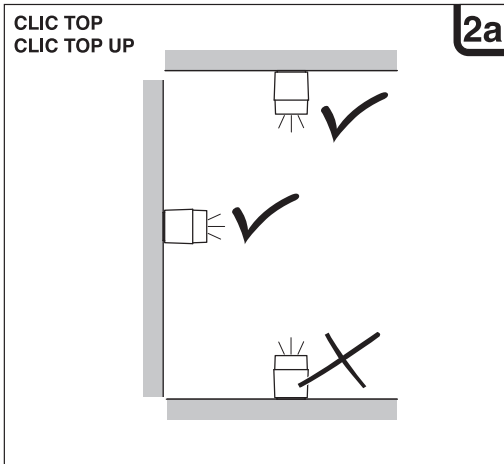
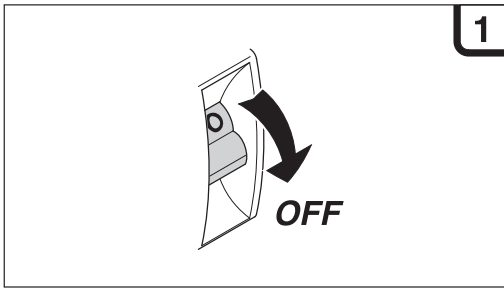
**CLIC POST**



**CLIC POST UP**

**LOMBARDO S.r.l.**

Via Pizzigoni, 3 - 24060 VILLONGO (Bergamo) Italia  
Tel. +39 035 939411 - Fax +39 035 939496  
[www.lombardo.it](http://www.lombardo.it) e-mail: [info@lombardo.it](mailto:info@lombardo.it)

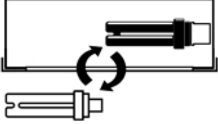
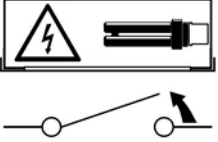
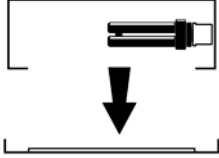
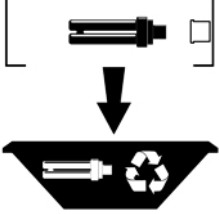
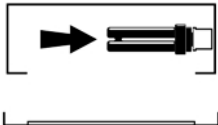
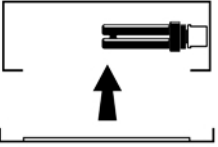
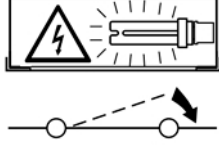


# LOMBARDO



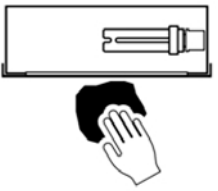
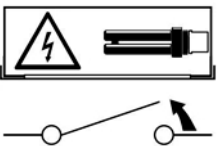
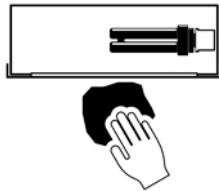
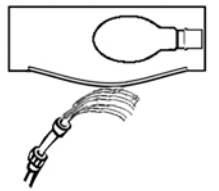
## I Istruzioni per le operazioni di servizio per l'apparecchio di illuminazione

### UK Instructions for service operations of the luminaire

<p><b>Sostituire la lampada parzialmente esausta</b></p> <p><i>Replace the lamp partially exhausted</i></p> 	<p><b>Spegnimento</b> Interrompere l'alimentazione all'apparecchio</p> <p><i>Switch off</i> <i>Cut the power supply to the luminaire</i></p> 	<p><b>Aprire l'apparecchio</b></p> <p><i>Open the luminaire</i></p> 	<p><b>Rimuovere la lampada esausta</b> Portarla in un centro di riciclaggio</p> <p><i>Insert the new lamp</i> <i>Insert the new lamp into the socket</i></p> 
<p><b>Inserire nuova lampada</b> Inserire la nuova lampada nel portalamпада</p> <p><i>Insert the new lamp</i> <i>Insert the new lamp into the socket</i></p> 	<p><b>Riposizionare ottica</b></p> <p><i>Place the diffuser/cover</i></p> 	<p><b>Effettuare prova di funzionamento</b></p> <p><i>Perform a functional test</i></p> 	

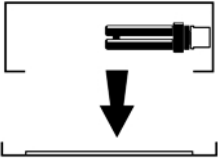
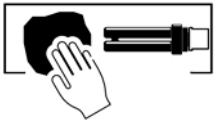
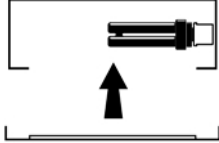
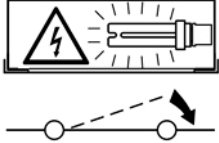
## I Istruzioni per la pulizia dell'apparecchio di illuminazione

### UK Instructions for cleaning of the luminaire

<p><b>Pulire l'apparecchio</b></p> <p><i>Clean the luminaire</i></p> 	<p><b>Spegnimento</b> Interrompere l'alimentazione all'apparecchio</p> <p><i>Switch off</i> <i>Cut the power supply to the luminaire</i></p> 	<p><b>Spolverare l'ottica esterna</b></p> <p><i>Dust the diffuser/cover on the outside</i></p> 	<p><b>Lavare l'ottica esterna</b></p> <p><i>Wash the diffuser/cover on the outside</i></p> 
--	--	---	--

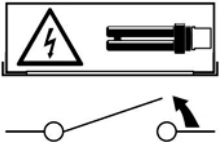
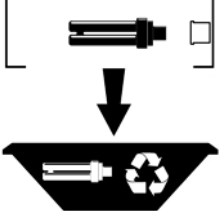
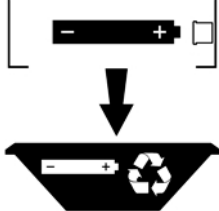
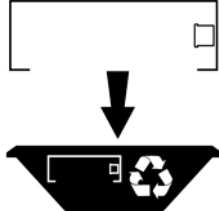
# LOMBARDO



<p><b>Rimuovere l'ottica</b> <i>Remove the diffuser/cover</i></p> 	<p><b>Pulire la parte interna dell'apparecchio di illuminazione</b> <i>Clean the inside of the luminaire</i></p> 	<p><b>Riposizionare l'ottica</b> <i>Place the diffuser/cover</i></p> 	<p><b>Effettuare la prova di funzionamento</b> <i>Perform a functional test</i></p> 
---	--	---	---

## I Istruzioni per il fine vita e lo smaltimento dei componenti

### UK Instructions for end-life and disposal of components

<p><b>Spegnimento</b> Interrompere l'alimentazione all'apparecchio <i>Switch off</i> <i>Cut the power supply to the luminaire</i></p> 	<p><b>Rimuovere la/le lampada/e per la dismissione</b> <i>Remove the lamp for disposal</i></p> 	<p><b>Rimuovere la batteria per la dismissione</b> <i>Remove the battery for disposal</i></p> 	<p><b>Rimuovere l'apparecchio per la dismissione</b> <i>Remove the luminaire for disposal</i></p> 
<p><b>Inviare i materiali ad un centro di raccolta RAEE</b> <i>Send the materials to a WEEE collection center</i></p> 