

FLINDT WALL

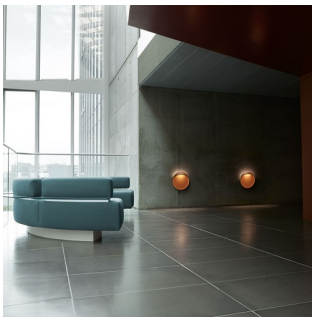
Flindt Wall - 5747407987

The wall lamp emits an asymmetrical glare-free, downward directed light distribution. Softly illuminating its cut-out shape while providing an efficient horizontal illumination on the ground or floor. Perfect for indoor as well as outdoor applications.

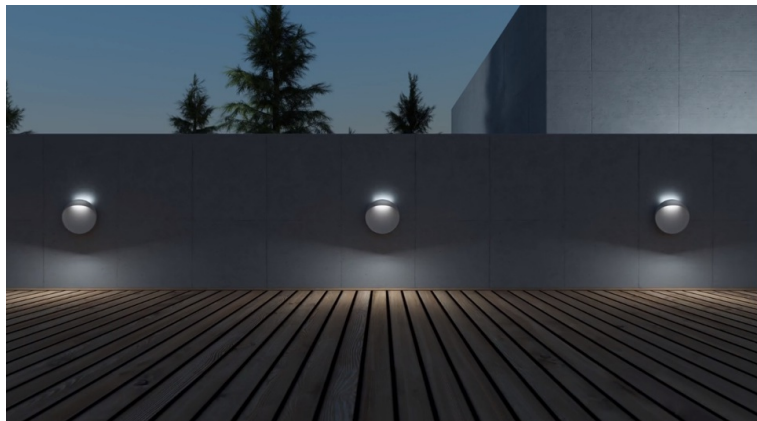


Christian Flindt

Christian Flindt (1972-) graduated with an MAA and MDD from Aarhus School of Architecture in 2002. He then started his own design company in 2003. Here, he placed high emphasis on communication between people, and his focus on this area finds expression in his approach to re-evaluating furniture.



**Set location -
Copenhagen**



Product info

Environmental Product Specification

This product is compliant with the requirements contained in the European Directives, RoHS Directive 2011/65 and 2015/863. This product is designed so that 100% of the product can be disassembled and reused.

Information

The fixture can be installed without dimming. For dimming a Dali dimming system and suitable wiring is required. Ø200 LED: Compatible with leading and trailing edge mains dimmers. Please note that low power consumption on some products can affect dimming properties. This product is fitted with an integrated energy-saving LED light source. Should you wish to replace it, please contact Louis Poulsen so we can help you purchase the correct LED Replacement Kit. Please note that LED-replacement should always be carried out by an authorised electrician.

Mounting

Ø200: Installation cable 3x1.5 mm². Looping not possible. Integrated driver. Ø300/400: Installation cable- 3x1.5mm² + 2x1.5 mm² (Dimming). Looping possible. Integrated driver.

Finish

Aluminium, Corten, White, or Black coloured. Textured surface, powder coated.

Materials

Front and back housing: Die casted. Light Engine: Die casted aluminum and injection molded acrylic.

Sizes and weights

Width x Height x Length (mm) | 60 x 200 x 200 Max 0.9 kg | 80 x 300 x 300 Max 3.8 kg | 100 x 400 x 400 Max 6.7 kg

Class

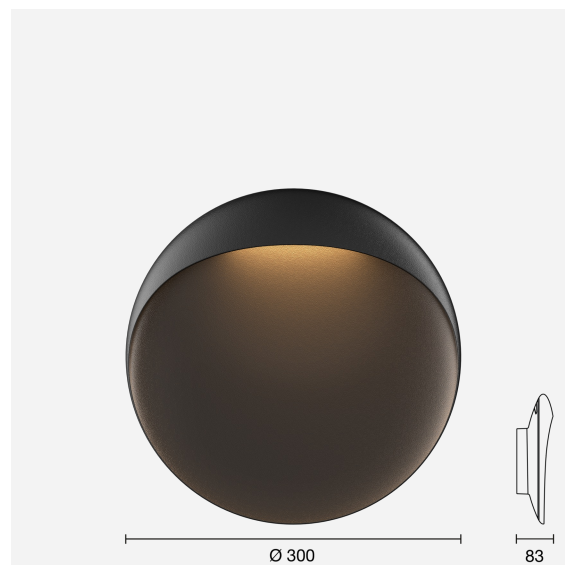
Ingress protection IP65. Electric shock protection I w. ground. Ø200: IK08. Ø300/400: IK09.

Light source

LED 2700K 16W
Lumen: 495

Information

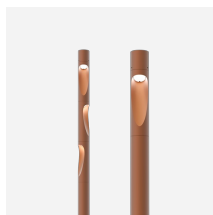
The fixture can be installed without dimming. For dimming a Dali dimming system and suitable wiring is required. Ø200 LED: Compatible with leading and trailing edge mains dimmers. Please note that low power consumption on some products can affect dimming properties. This product is fitted with an integrated energy-saving LED light source. Should you wish to replace it, please contact Louis Poulsen so we can help you purchase the correct LED Replacement Kit. Please note that LED-replacement should always be carried out by an authorised electrician.



Related products



Flindt Garden Bollard



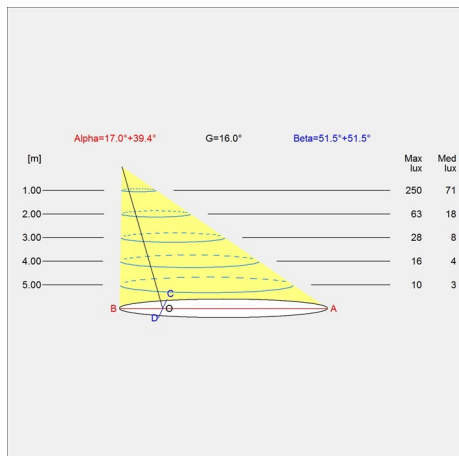
Flindt Plaza



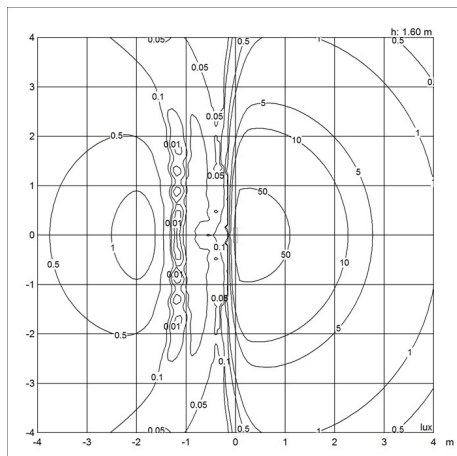
Flindt Bollard

Light distribution diagrams

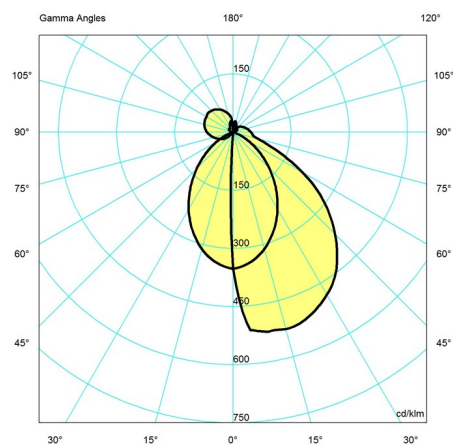
Cartesian



Isolux



Polar



Data specifications

Colour	Black texture
Width	80
Built-in Height	-
Class	I
Standby (W)	0,3
Inrush Current	7A/26.4µs 0.0011A2s
Kelvin	2700
SDCM	3
Watt	16
Light control	Dali
UGR Transversal / Axial	19.0/11.5
Driver life	100000

Length	300
Height	300
IP class	65
Net Weight	3.8
Power Factor (P = 100 % / P = 50 %)	-
Light source	LED 2700K 16W
CRI	90
Lumen	495
Efficacy	31
Min. Dim Level (%)	-
L80B50 (hours)	>100.000