

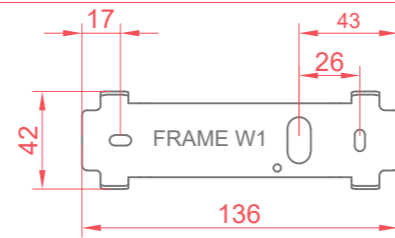
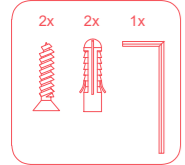
AVVERTENZE:
 Dimmerazione Frame W1 & Frame W2 fase:
 E' sconsigliata la dimmerazione di apparecchi Frame W1 e Frame W2 sulla stessa linea elettrica.
 Utilizzare circuiti indipendenti con relativo dimmer per l'alimentazione di soli apparecchi Frame W1
 Utilizzare circuiti indipendenti con relativo dimmer per l'alimentazione di soli apparecchi Frame W2.

NOTICE:
 Dimming of Frame W1 and Frame W2 - Phase:
 It is not recommended to dim the Frame W1 and Frame W2 units on the same power supply line.
 Use independent circuits with related dimmers for powering Frame W1 units alone.
 Use independent circuits with related dimmers for powering Frame W2 units alone.

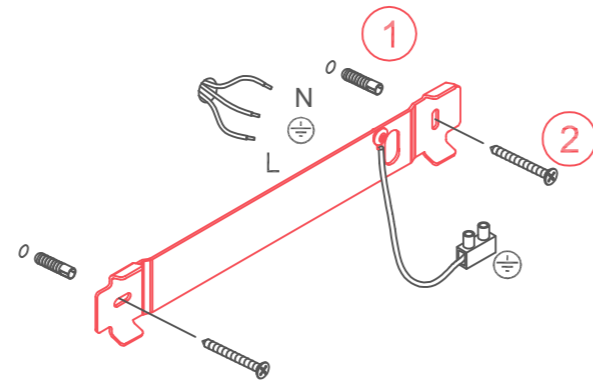
INSTRUCTIONS:
 Variation de lumière du Frame W1 et du Frame W2 - Phase:
 Il est déconseillé de prévoir la variation d'éclairage d'appareils Frame W1 et Frame W2 à partir de la même ligne électrique.
 Il faut utiliser des circuits indépendants, avec leur variateur de lumière respectif, pour l'alimentation d'appareils Frame W1 uniquement.
 Il faut utiliser des circuits indépendants, avec leur variateur de lumière respectif, pour l'alimentation d'appareils Frame W2 uniquement.

WARNINWEISE:
 Dimmen von Frame W1 und Frame W2 - Phase:
 Vom Dimmen von Geräten Frame W1 und Frame W2 auf der gleichen Stromleitung wird abgeraten.
 Unabhängige Stromkreise mit entsprechendem Dimmer verwenden, um nur Geräte Frame W1 mit Strom zu versorgen.
 Unabhängige Stromkreise mit entsprechendem Dimmer verwenden, um nur Geräte Frame W2 mit Strom zu versorgen.

incluso / included



Mantenere il foro entrata cavi a destra staffa per montare correttamente apparecchio.



PHASE DIMMING

Per la regolazione dell'intensità luminosa si devono utilizzare DIMMER LED a taglio di fase funzionanti sul fronte di discesa (trailing edge T.E). Si consiglia di utilizzare uno dei seguenti moduli:

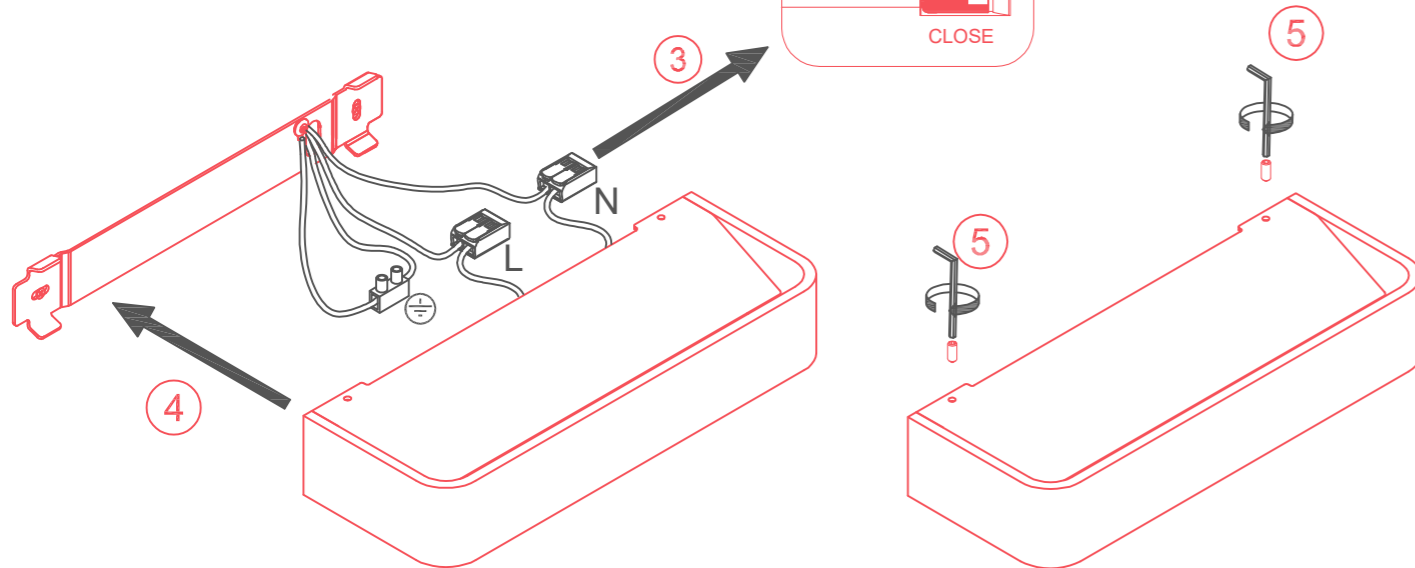
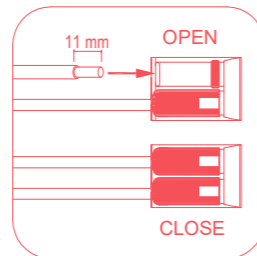
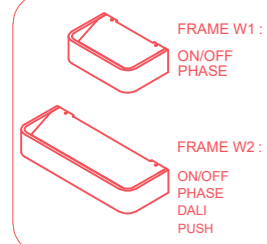
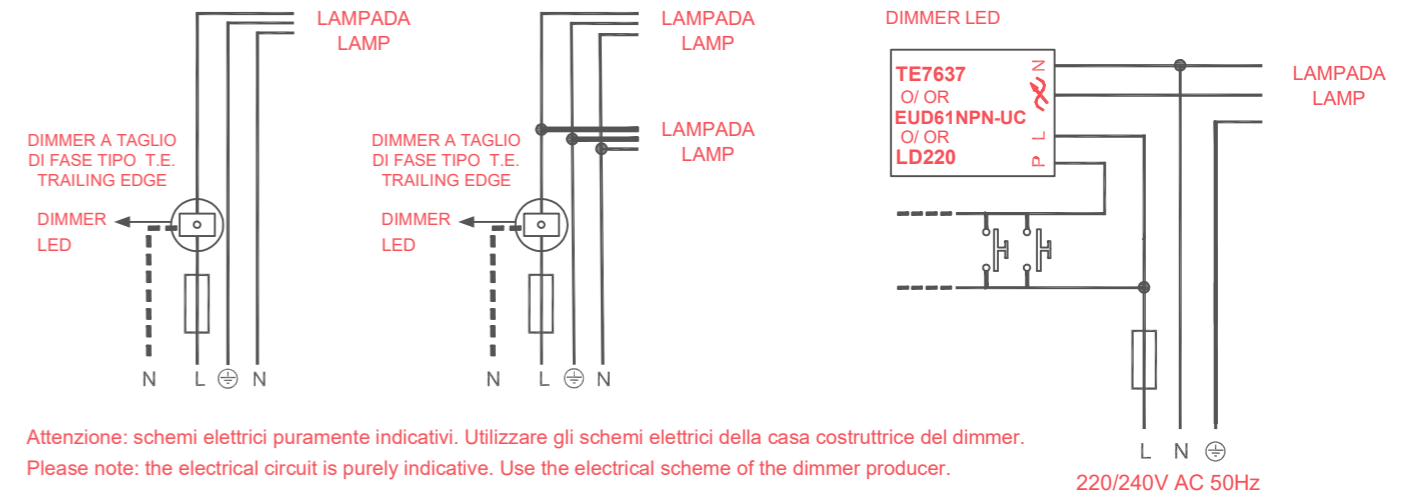
To adjust the light intensity, need to be used DIMMER LED trailing edge T.E. type.
 We recommend to use one of the following modules:

Per scatola frutto / For built-in solutions:

- 20135.1, 19135.1, 16559.1, 14135.1 - VIMAR
- TE44895BTLED - TECNEL
- B-TICINO L-N-NT4411N

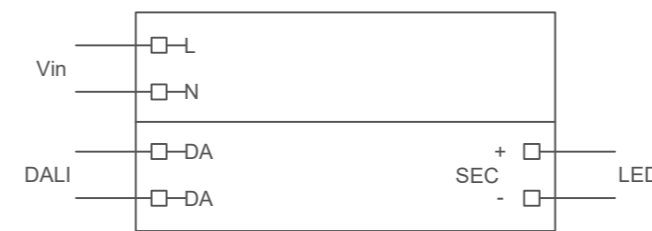
Per scatola di derivazione / For remote electric box

- TE7637 - Tecnel
- EUD61NPN - UC Eltako
- LD 220 - Vadsbo



Collegamento DALI - DALI diagramm

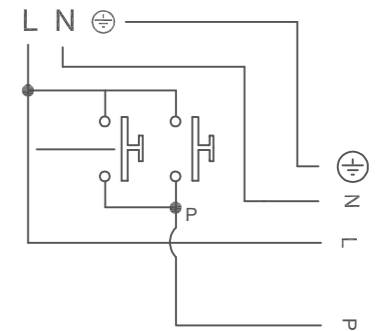
ONLY FOR FRAME W2



Collegamento PUSH - PUSH diagram

ONLY FOR FRAME W2

MAX 3 LAMPADE
 NON UTILIZZARE PULSANTI
 CON SPIA LUMINOSA.
 MAX 3 LAMPS
 DO NOT USE PUSH BUTTONS
 WITH LIGHT INDICATOR



DIM TO WARM (2200°K - 3000° K)

⚠ IT: Funziona solo con Dimmer a taglio di fase.
 EN: It operates only with phase-cut dimmer.

