

Safety instructions

Please keep these instructions.

1. This product contains a Li-ion battery. Misuse of the battery may lead to potentially hazardous outcomes. Damaged or defective batteries may increase the risk of critical battery failure. In case of smoke, battery swelling, or an odor while charging, terminate charging immediately.
2. To avoid a hazard, the battery shall be replaced exclusively by the manufacturer, the manufacturer's service agent, or a similarly qualified person.
3. The lamps get very hot when in use. Please allow the lamps to cool down before touching them.
4. Do not disassemble the lamp when switched on.
5. The system should not be enlarged with additional lamps.
6. Please do not place objects on your system (e.g. for decorative purposes) if they were not delivered with the system.
7. To avoid greasy fingerprints, wearing white cotton gloves when handling visible metal parts is recommended.
8. When indicator light is green the lamp should be removed from the charger. Over-charging will cause harm to the battery.
9. Decrease in battery life is expected over time. Replacement is available.
10. We reserve the right to make technical alterations.

IP65 - Suitable for outdoor use.

Light source: 3W, replaceable LED-module 3-step dimmable.

Battery: Li-ion, 7200mAh, 26.6Wh.

Operating temperature: -20°C to 60°C

Charging temperature: 0°C to 45°C



2024-05-23 EU

NUURA

www.nuura.com
info@nuura.com

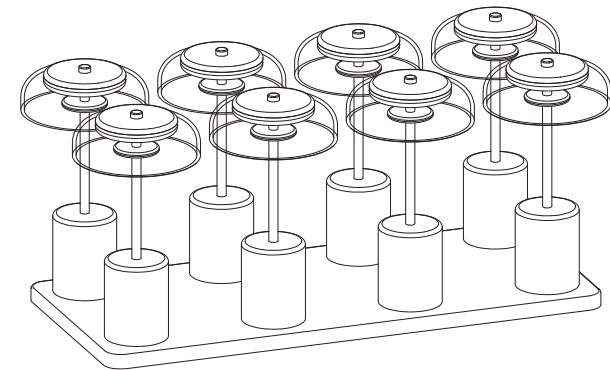
© 2024 All rights reserved



Blossi Table Mini

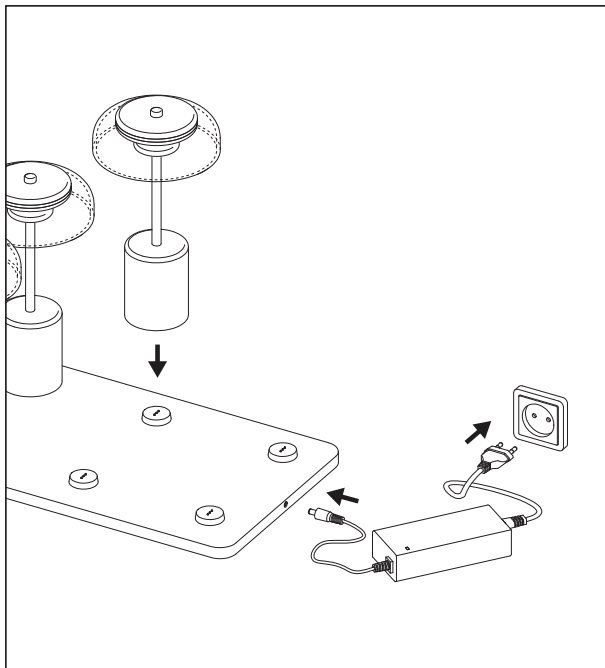
portable with multi charger

User instructions



NUURA

© 2024 All rights reserved

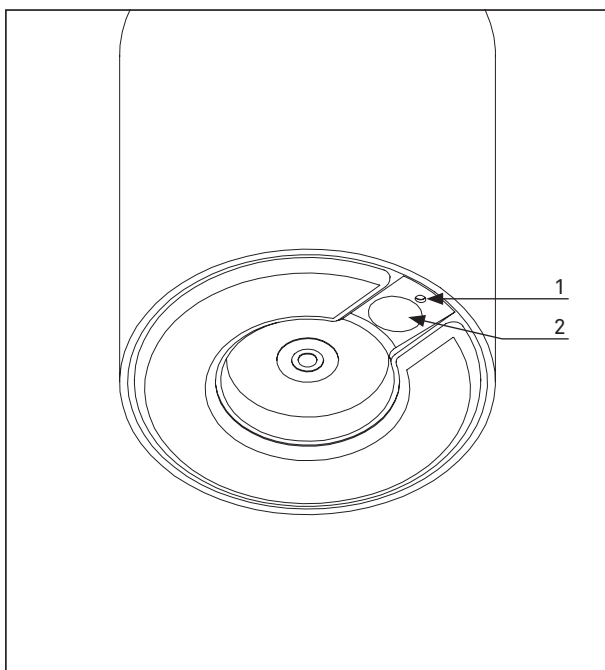


Charging

Connect power to the charging base by connecting to the power adaptor and plug it into a wall outlet.

A cable with a local plug is included.

Place the lamp one of the eight bases to charge the lamp. The indicator light is red when charging.



1. Indicator light

Green = fully charged

Red = charging

Flashing red = needs charging

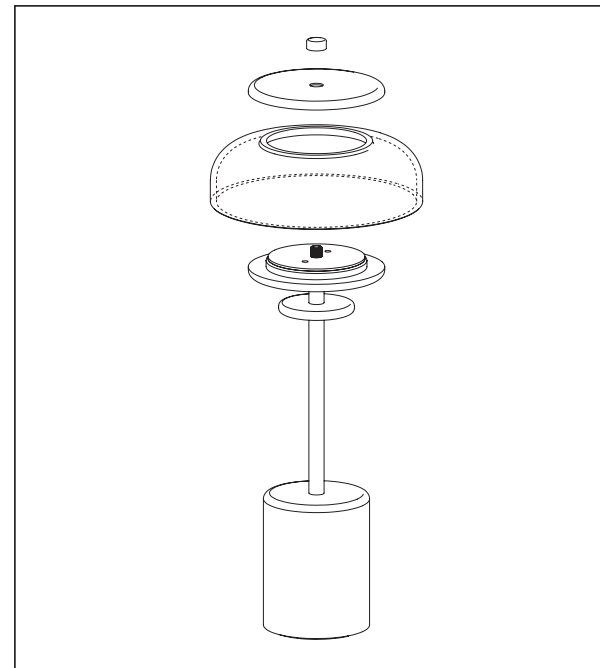
2. Touch function

1st touch = 100% power

2nd touch = 50% power

3rd touch = 10% power

4th touch = OFF

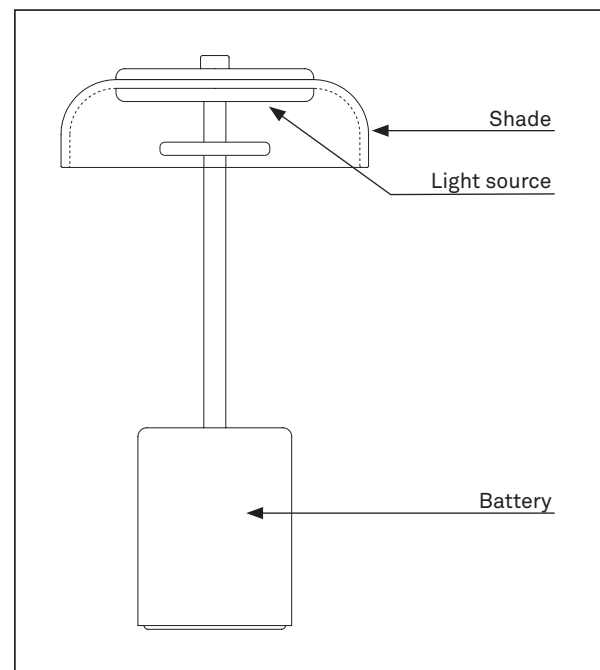


Cleaning and replacement of shade

For easier cleaning and replacement, the shade can be separated from the lamp. To remove it, turn the finger nut counterclockwise and lift the top plate off.

Use a soft, dry cloth to clean the product. Do not use household cleaners.

When reassembling, make sure to tighten the finger nut properly.



Replaceable components

Shade, LED-module and battery are replaceable.

Spare parts and instructions can be found at www.nuura.com.