

# INSTALLATION MANUAL

## MEMORY PC876

Ceiling light



### COMPONENTS OF PACKAGING:

glass shade, metal fixture, metal string pull, cotton gloves,  
installation manual

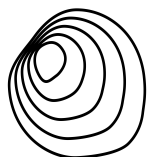
### WARNING:

**Installation must be carried out by a  
qualified electrician only.**

**Switch off power at main circuit panel  
prior to installation!**

**The manufacturer assumes no liability  
for damage occurring during transport  
or resulting from incorrect assembly.  
When unpacking the light, do so with**

**Instalation time: 30 minutes/1 person**



BROKIS®

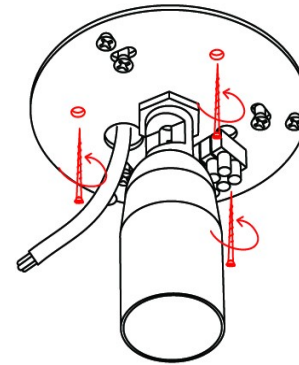
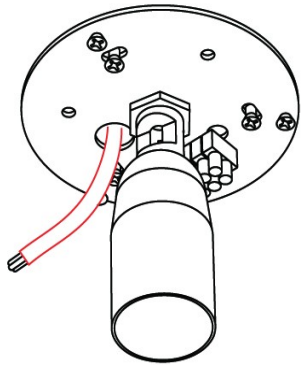
BROKIS S.R.O.  
ŠPANIĚLOVA 1315/25  
163 00 PRAHA 6 - ŘEPY  
CZECH REPUBLIC

ORG. ID 64940799  
VAT ID CZ64940799  
C 42174 MĚSTSKÝ SOUD  
V PRAZE

TEL +420 567 211 517  
TECHNICAL@BROKIS.CZ  
INFO@BROKIS.CZ  
WWW.BROKIS.CZ

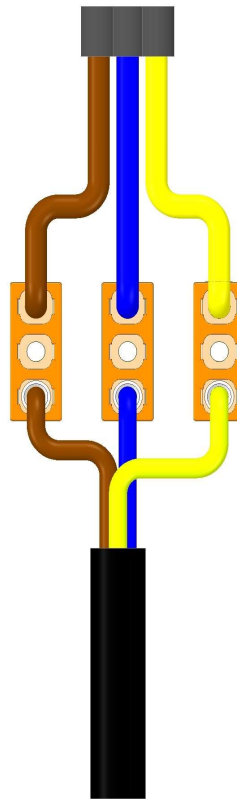
## 1. MOUNTING THE METAL FIXTURE

Using anchors of sufficient strength (not included), secure the metal fixture to the ceiling. With regard to various types of ceilings, we recommend consulting installation with an expert. The manufacturer assumes no liability for incorrect installation, the use of improper anchors, or defects in the material to which the light is secured.



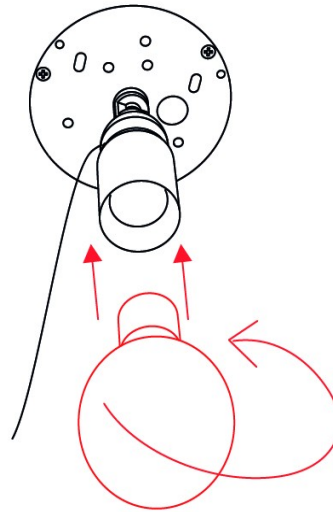
## 2. CONNECTING THE LIGHT TO THE BUILDING WIRING

Connect the light to the building wiring according to the connection diagram.



### 3. INSTALLING THE LIGHT SOURCE

Install the light source (not included).

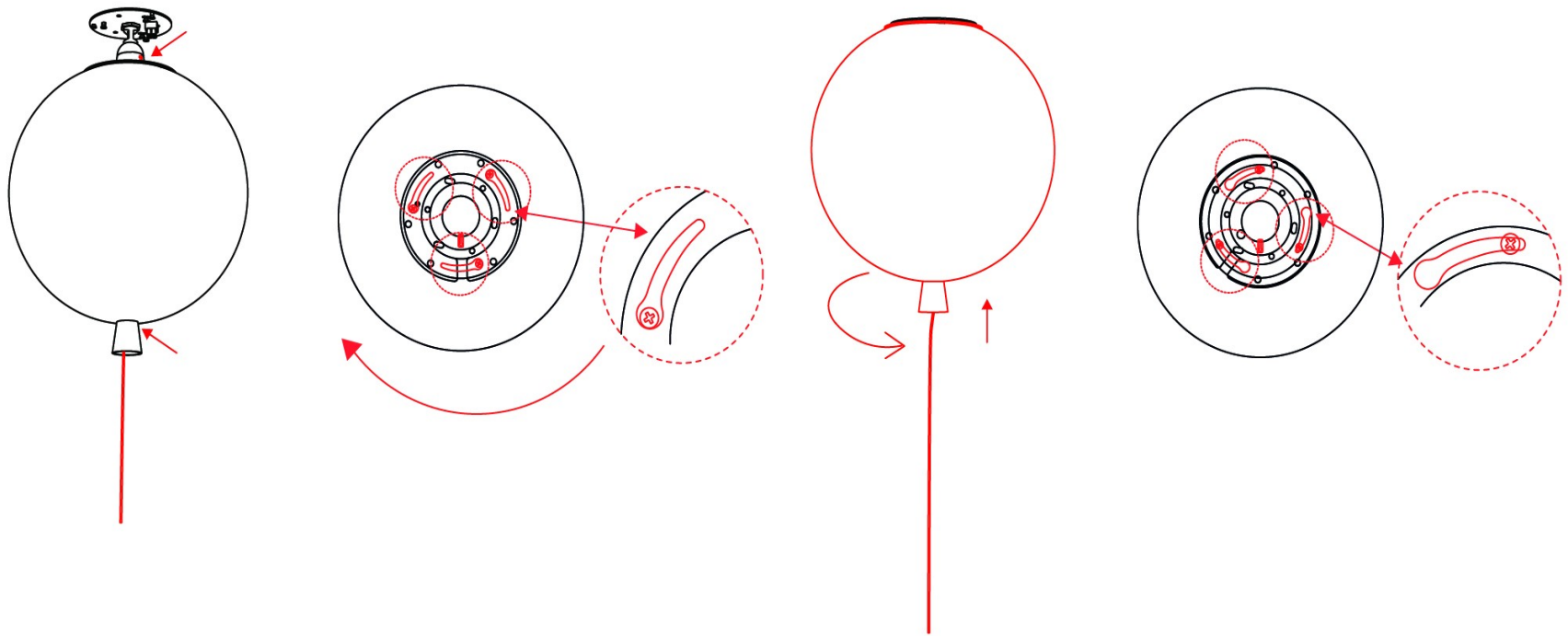


#### 4. ATTACHING THE GLASS SHADES

Pass the string hanging from the metal light fixture through first the large opening and then the small opening in the glass shade.

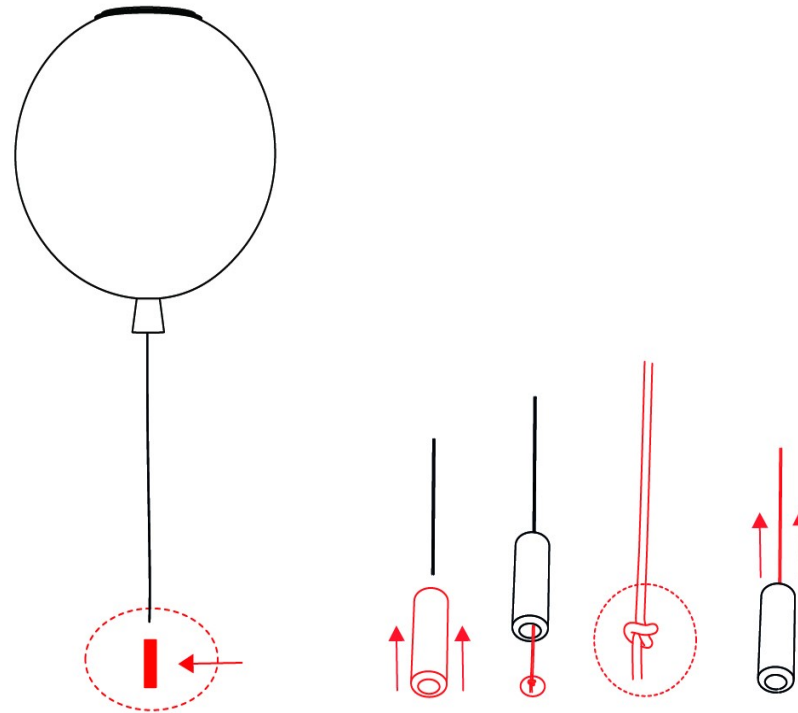
Connect the ground wire with FASTON terminal to the shade mounting ring.

Position the glass shade on the metal light fixture so that the screws pass through the openings in the shade mounting ring. Gently rotate the glass shade clockwise until it is secured firmly to the metal light fixture. If rotation is not smooth, do not use force. Reposition the glass shade and start again.



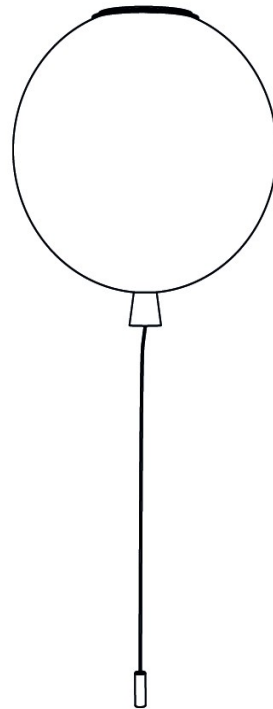
## 5. INSTALLING THE METAL STRING PULL

Pass the string through the metal string pull and secure with a knot.



## 6. SWITCHING ON THE LIGHT

Restore power at the main circuit panel and verify that the light works properly.





## CLEANING THE GLASS

**The light can be cleaned using common cleaning agents. Never use solvents or abrasives (scouring powder).**

**PRIOR TO SHIPPING, THE FUNCTIONALITY OF EACH LIGHT AND ITS COMPONENTS IS THOROUGHLY TESTED. THE MANUFACTURER ASSUMES NO LIABILITY FOR THE MISHANDLING OF PRODUCTS.**



**BROKIS®**

BROKIS S.R.O.  
ŠPANIĚLOVA 1315/25  
163 00 PRAHA 6 - ŘEPY  
CZECH REPUBLIC

ORG. ID 64940799  
VAT ID CZ64940799  
C 42174 MĚSTSKÝ SOUD  
V PRAZE

TEL +420 567 211 517  
TECHNICAL@BROKIS.CZ  
INFO@BROKIS.CZ  
WWW.BROKIS.CZ