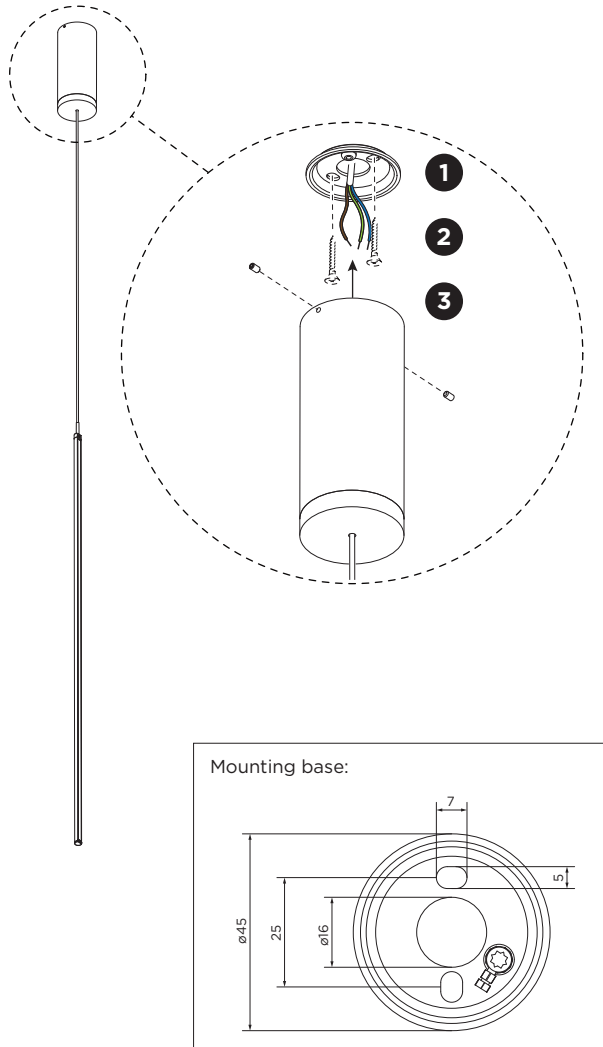
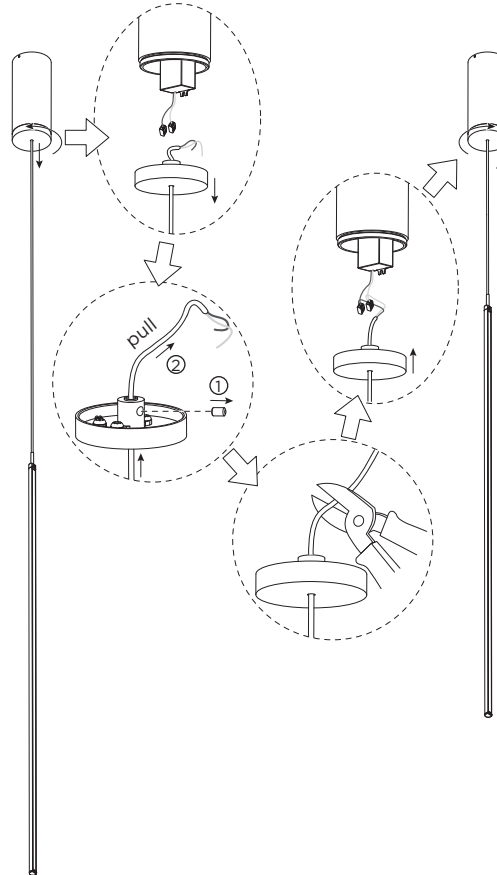


FINLIN SUSPENDED

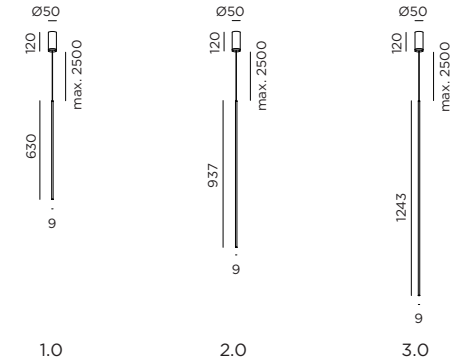
INSTALLATION INSTRUCTIONS | DECEMBER 2024



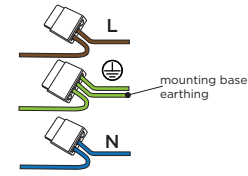
4 How to reduce the length of the cable.



DIMENSIONS

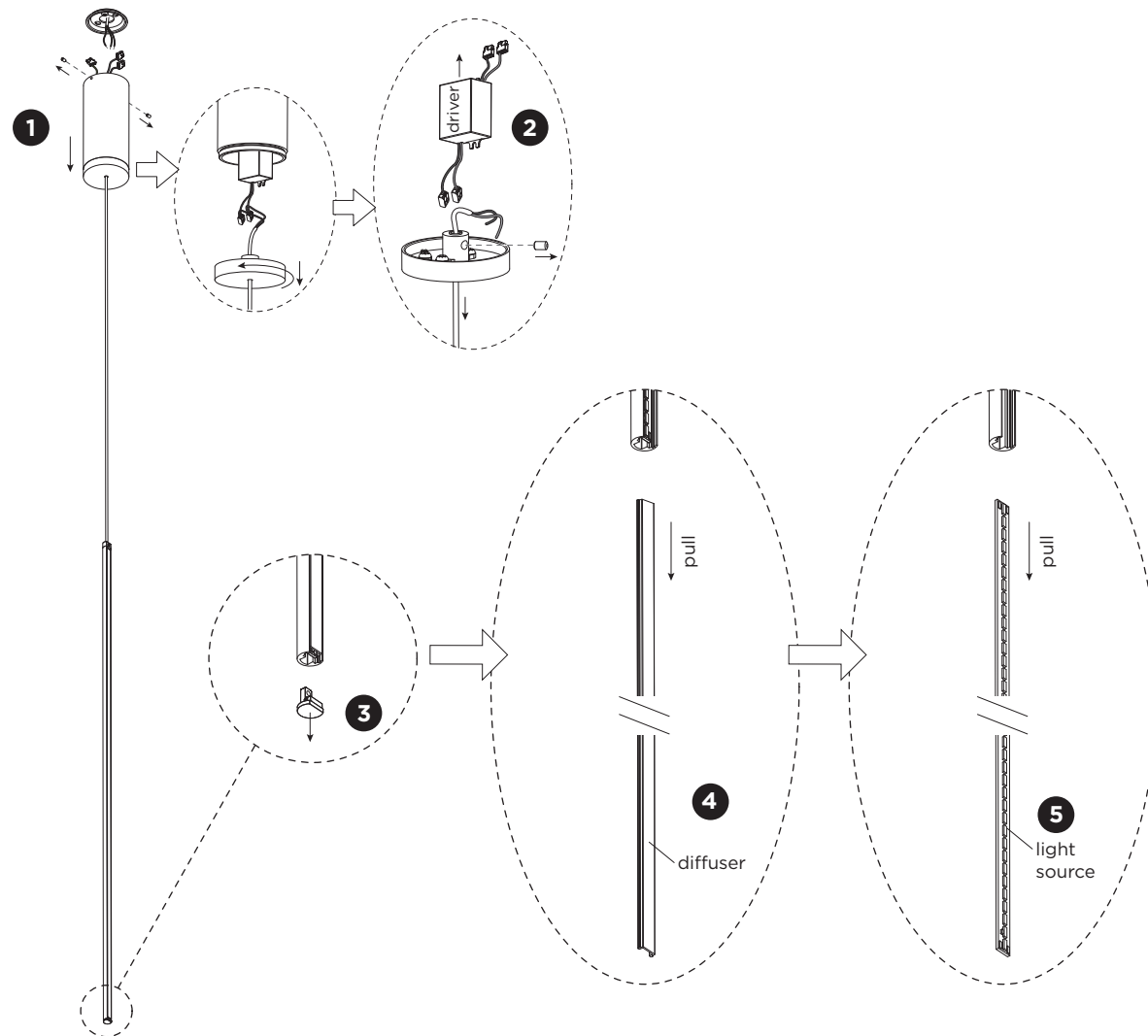


MOUNTING INSTRUCTION

- 1 Remove the mounting base from the luminaire by loosening the socket screws and mount it on the wall with screws (screws are not included).
- 2 **POWER CONNECTION**
Connect to 220-240V.

- 3 Fix the luminaire on the base with the socket screws.
- 4 The length of the cable can be shortened according to the needs of the user. See the diagrams for the details.
The driver must be powered off before disconnecting and connecting the cables.

FINLIN SUSPENDED

INSTALLATION INSTRUCTIONS | DECEMBER 2024



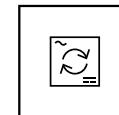
DISMOUNTING AND RECYCLING INSTRUCTIONS

Light source & driver

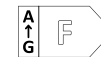
- 1 Loosen the socket screws and wires. Then remove the luminaire from the ceiling base.
- 2 Disconnect the wires and remove the driver.
- 3 Pull out the end cap from the tail end of the luminaire.
- 4 Remove the diffuser.
- 5 Disconnect the wires and remove the light source.



The light source is replaceable by Wever & Ducré or by a professional with explicit authorisation. For more information please contact your local Wever & Ducré customer service point.



The driver can be replaced by the end user.



This luminaire contains a light source with the energy class F.



WEVER & DUCRÉ
LIGHTING

WEVER & DUCRÉ BV

Spinnerijstraat 99/21, 8500 Kortrijk, Belgium
weverducre.com