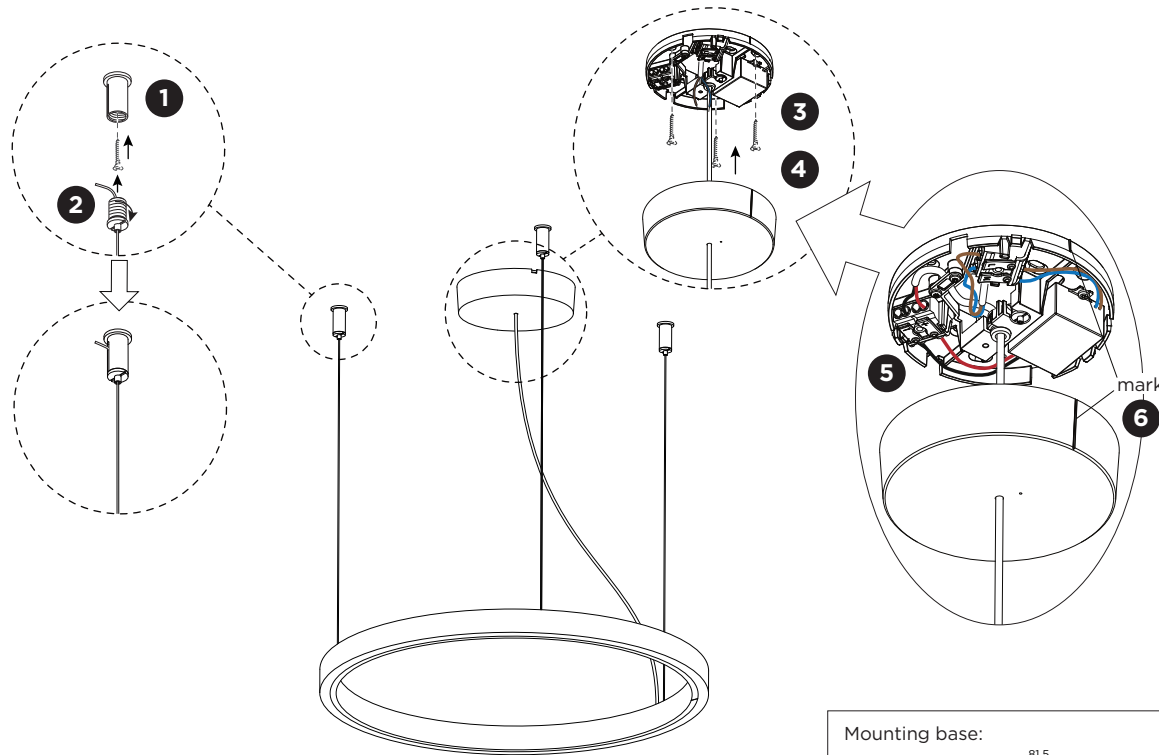
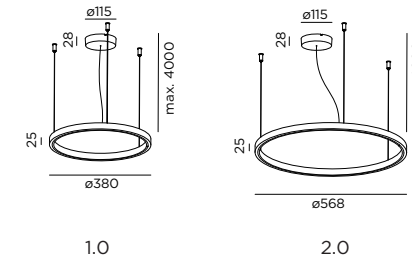


KUJO CEILING SUSPENDED

INSTALLATION INSTRUCTIONS | DECEMBER 2024

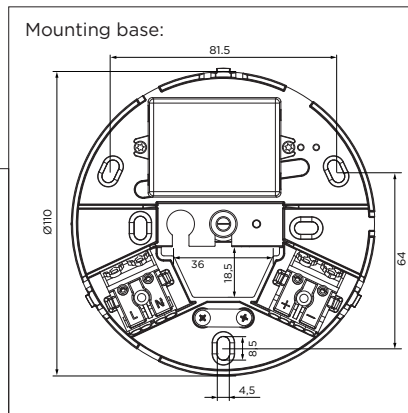
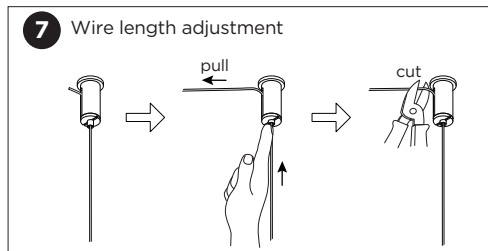
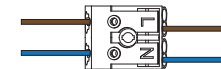


DIMENSIONS



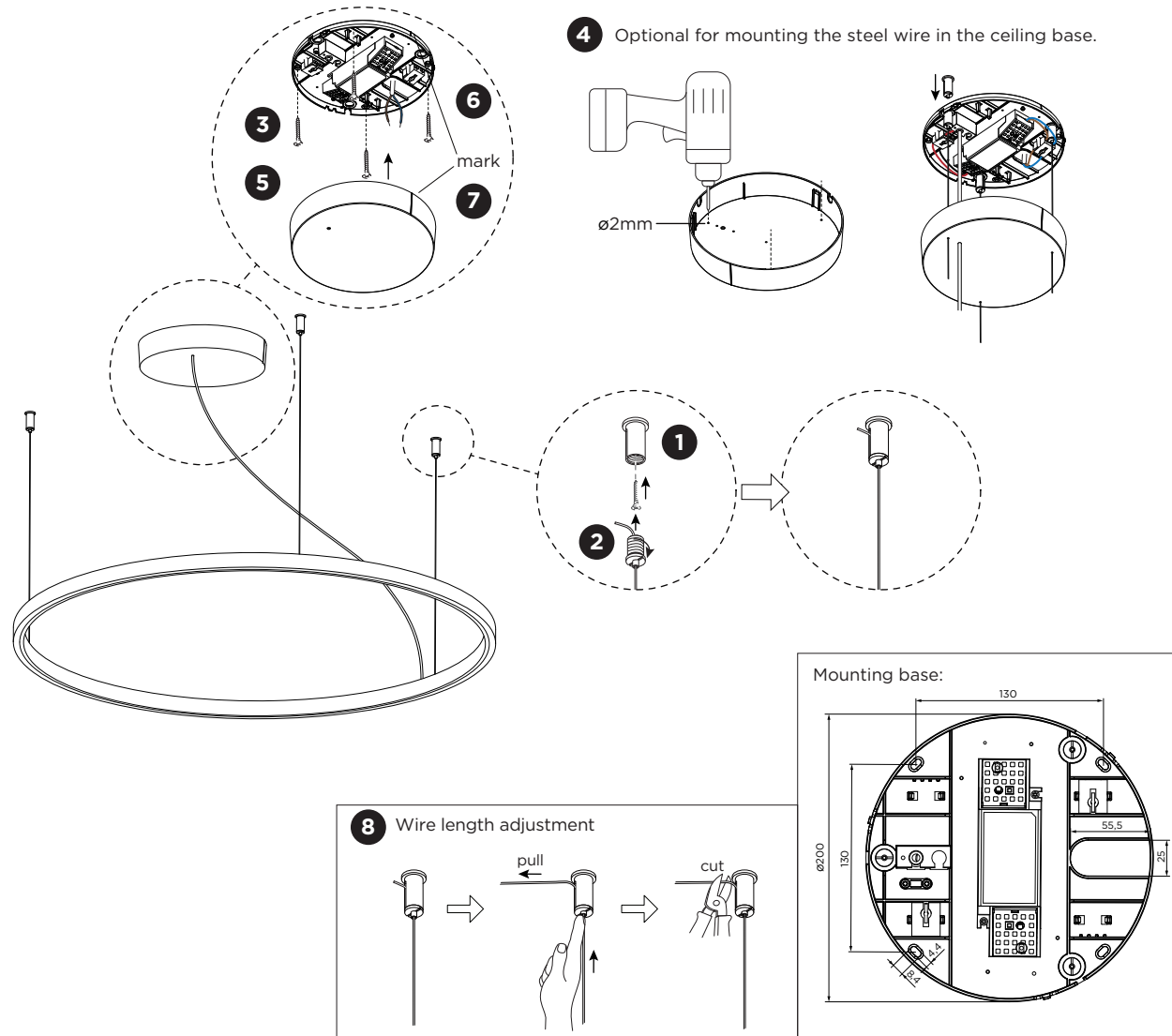
MOUNTING INSTRUCTION

- 1 Screw out the top pieces of the cable holders and fix them on the ceiling with screws (screws are not included).
- 2 Screw the cable holders back to the top piece.
- 3 Remove the cover of the mounting base by pulling and mount the base on the ceiling with screws (screws are not included).
- 4 Optional: shorten the cable to your required length. The driver must be powered off before disconnecting and connecting the cables.
- 5 **POWER CONNECTION**
Connect to 220-240V.
- 6 Align the marks on both of the mounting base and the cover. Push the cover on the mounting base until it clicks.
- 7 Adjust the steel wires to the required length.

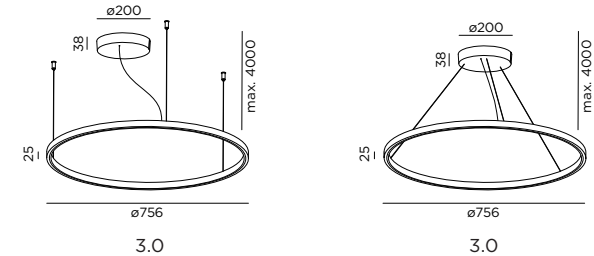


KUJO CEILING SUSPENDED

INSTALLATION INSTRUCTIONS | DECEMBER 2024

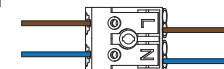


DIMENSIONS



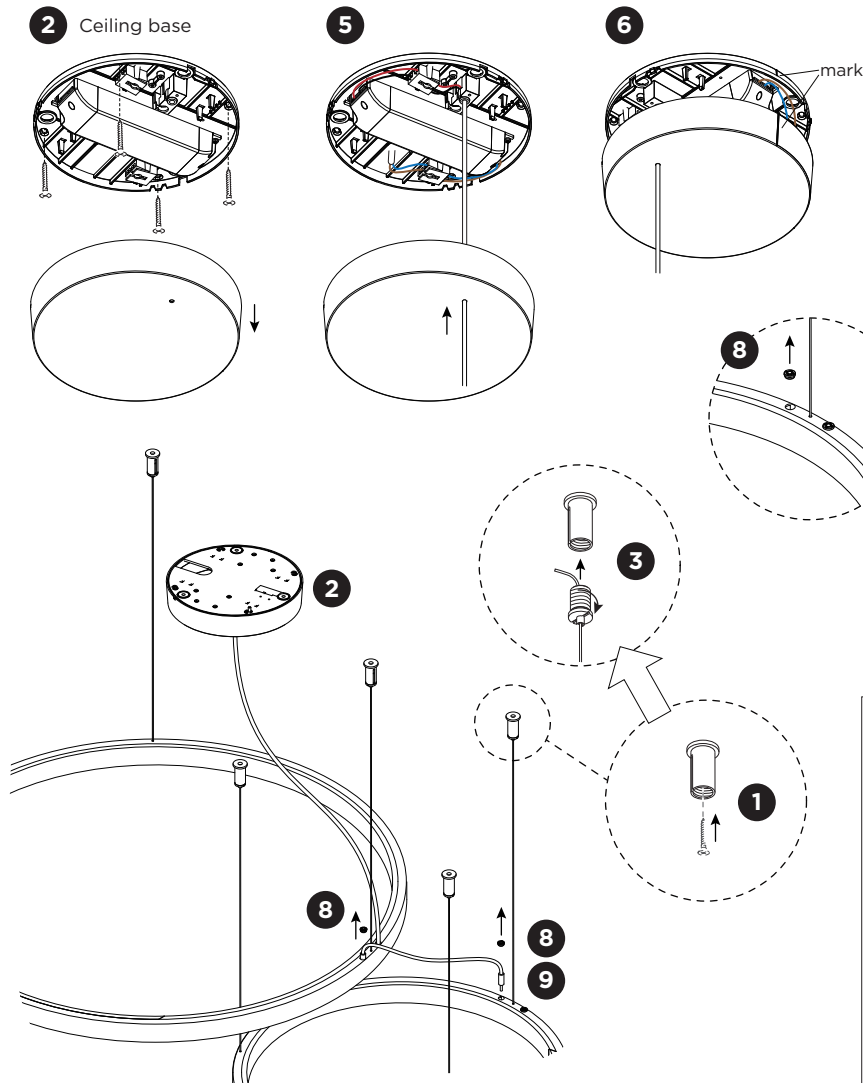
MOUNTING INSTRUCTION

- 1** Screw out the top pieces of the cable holders and fix them on the ceiling with screws (screws are not included).
- 2** Screw the cable holders back to the top piece.
- 3** Remove the cover of the mounting base by pulling and mount the base on the ceiling with screws (screws are not included).
- 4** Optional for 3.0: for mounting the steel wire in the ceiling base, drill three holes in the cover. Mount the wire lockers from the backside of the mounting base before screwing it to the ceiling. Pull the steel wires through the wire lockers.
- 5** Optional: shorten the cable to your required length. The driver must be powered off before disconnecting and connecting the cables.
- 6 POWER CONNECTION**
Connect to 220-240V.
- 7** Align the marks on both of the mounting base and the cover. Push the cover on the mounting base until it clicks.
- 8** Adjust the steel wires to the required length.

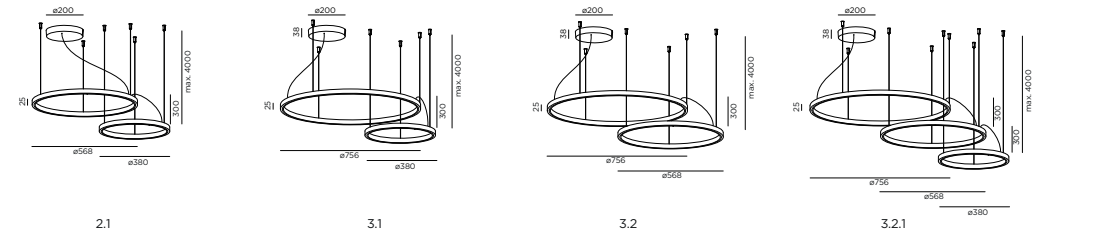


KUJO CEILING SUSPENDED

INSTALLATION INSTRUCTIONS | DECEMBER 2024

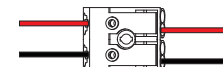
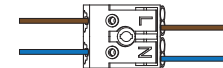


DIMENSIONS

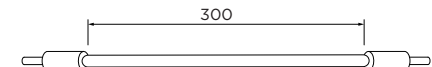
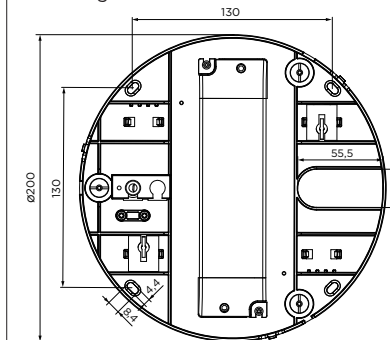


MOUNTING INSTRUCTION

- 1 Screw out the top pieces of the cable holders and fix them on the ceiling with screws (screws are not included).
- 2 Remove the cover of the mounting base by pulling and mount the base on the ceiling with screws (screws are not included).
- 3 Screw the cable holders back to the top piece.
- 4 **POWER CONNECTION**
Connect to 220-240V.
- 5 Pull the cable through the cover and connect the cables in the ceiling base.
- 6 Align the marks on both of the mounting base and the cover. Push the cover on the mounting base until it clicks.
- 7 For the positioning of the rings, take into account the in between lengths of the connection cables.
- 8 To connect the luminaires, remove the covers from the needed holes. All holes can be used as outlet as well as inlet.
- 9 Connect the cables to the luminaires.

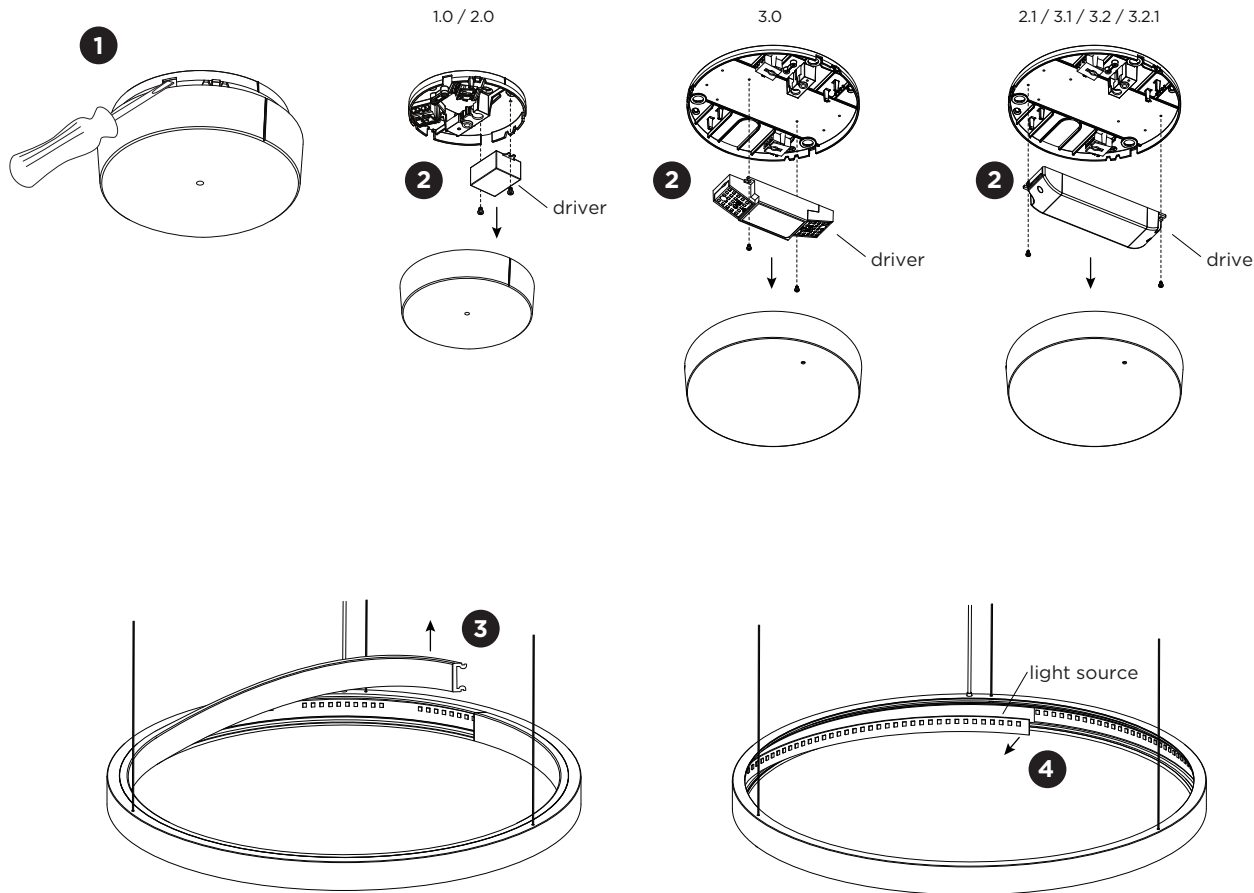


Mounting base:



KUJO CEILING SUSPENDED

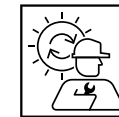
INSTALLATION INSTRUCTIONS | DECEMBER 2024



DISMOUNTING AND RECYCLING INSTRUCTIONS

Light source & driver

- 1 Remove the lid from the mounting base by placing a flat tool into the gap and pushing it down.
- 2 Disconnect the wires and unscrew the driver to remove it.
- 3 Remove the silicone cover by pulling it off.
- 4 Pull out the light source to remove it.



The light source is replaceable by Wever & Ducré or by a professional with explicit authorisation. For more information please contact your local Wever & Ducré customer service point.



The driver can be replaced by the end user.

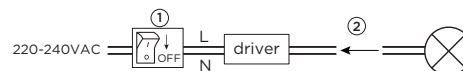


This luminaire contains a light source with the energy class E.



Driver must be powered off before connecting the cables.

Before connecting the luminaire/LED module to the driver please make sure the driver is not powered but disconnected from the mains. The driver can only be powered when the luminaire/LED module is already connected. Disregarding this instruction might damage or even destroy the luminaire/LED module.



WEVER & DUCRÉ
LIGHTING

WEVER & DUCRÉ BV

Spinnerijstraat 99/21, 8500 Kortrijk, Belgium
weverducre.com