

# MOUSQUETON PORTABLE LAMP

PRODUCT FACT SHEET



**HAY**

## MOUSQUETON PORTABLE LAMP

DESIGN BY INGA SEMPÉ, 2023

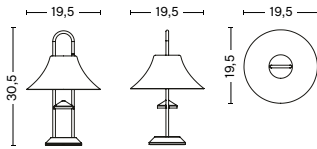
Named after the French word for carabiner, Inga Sempé's Mousqueton Portable Lamp is an outdoor LED lamp that presents a functional lighting solution with a familiar yet contemporary aesthetic. Technical details are integrated into the design as decorative elements, including a multi-purpose carabiner hook that enables users to suspend the lamp over a branch or rope and a central hole that leaves space for a stick to balance the lamp body when out in nature.

Featuring a rechargeable battery for easy and spontaneous placement, the lamp's weather-proof body is made from stainless steel and a zinc alloy with a choice of coloured shades, making it ideal for both inside and outside use.

### HIGHLIGHTS

- Part of a progressive and technologically advanced lighting collection.
- A colourful, portable and robust LED-based lamp that can be used freestanding in a number of different environments and applications.
- CE and ETL approved for both EU and US markets.
- Integrated LED light source ensuring a life span of at least 25,000 hours of use.
- Integrated touch step dimmer switch with three standard settings inside of the shade.
- Minimum 10 hours of use before the battery requires recharging via USB-C.
- Qualified for contract use.
- IP44 outdoor rated.
- Suitable for both indoor and outdoor environments.

### DIMENSIONS



DIAMETER Ø19,5 CM  
HEIGHT 30,5 CM

### MATERIALS

#### LAMP BASE

Die-cast zinc-alloy and stainless steel tubes.

#### LAMP SHADE

Spun steel.

#### CORD

PVC micro USB-C cable (100 cm).

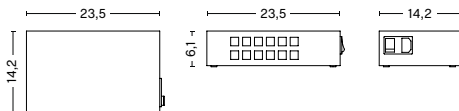
#### LAMP HOUSING

Injection moulded ABS.

### OPTIONS

A USB charging station able to charge 24 Mousqueton Portable Lamps simultaneously.

Designed for settings where multiple Mousqueton Portable Lamps are used on a regular basis.



### COLOUR & FINISH

Please note that the colour codes are indicative.



BRUSHED  
STAINLESS  
STEEL



OYSTER WHITE  
STEEL



IRON RED  
STEEL

## TECHNICAL SPECIFICATIONS

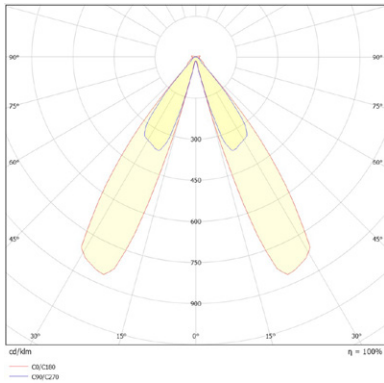
LIGHT SOURCE Integrated LED, 3W, 157lm, 2550K warm white	DIMMABLE Yes	POWER SUPPLY 220-240V AC at 50/60Hz	IP 44	SWITCH Touch step dimmer. (Integrated inside of the shade)
---	-----------------	--	----------	---

## TEST SPECIFICATION OUTPUT\*

FLUX (LUMENS) 157lm	CCT (KELVIN) 2550K, warm white	CRI (1-100) >80
------------------------	-----------------------------------	--------------------

\*Photometrics and the specification shown is taken using the integrated LED bulb fitted in the production luminaire.

## PHOTOMETRICS



## CERTIFICATES

CE APPROVED

This product has been assessed and complies with the essential requirements of the relevant European directives.



Tested according to the following European EN IEC standards which relate specifically to electrical lighting products including:

- EN 61547:2009 (EMC immunity requirements (EMC))
- EN 61347-1:2015/A1:2021 (General and safety requirements for lamp controlgear (LVD))
- EN 61347-2-11:2001/A1:2019 (Particular requirements for misc. electronic circuits used with luminaires (LVD))
- EN 61000-3-3:2013+A2:2021 (Limits for harmonic current emissions (EMC))
- EN 60598-2-4:2018 (Particular requirements for portable general purpose luminaires (LVD))
- EN IEC 55015:2019+A11:2020 (Radio disturbance (EMC))
- EN IEC 60598-1:2021+A11:2022 (General requirements and tests for luminaires (LVD))
- EN IEC 61000-3-2:2019+A1:2021 (Limits for harmonic current emissions (EMC))
- EN IEC 62031:2020/A11:2021 (Safety specifications for LED modules for general lighting (LVD))
- EN 62493:2015 (Assessment of lighting equipment related to human exposure to electromagnetic field (LVD))

## COUNTRY OF ORIGIN

China

## DOWNLOADS

Packshots and lifestyle photos, 2D / 3D files, care and maintenance, instructions, test certificates, product fact sheets, and product presentations are available in our Digital Library at hay.com.

[LINK TO DIGITAL LIBRARY](#)