

Random Cloud,  
Design by Chia-Ying Lee

Model Random Cloud 7 Lights Ø23

Random Cloud captures the essence of why a cloud continues to fascinate us: voluminous yet simultaneously light and ethereal.



Random Cloud 7 Lights Ø23	Light source	Canopy: Metal	Diffuser: Blown glass	Code 2700 K	Code 3000 K
	2700 K 35 W 3150 lm 220-240 V CRI 90 MacAdam 3-Step	Matte White – 9010	Clear	22121 0027	22121 0030
	or	Matte White – 9010	Frosted White	22121 1327	22121 1330
		Matte White – 9010	Chrome	22121 4027	22121 4030
	3000 K 35 W 3360 lm 220-240 V CRI 90 MacAdam 3-Step	Matte White – 9010	Glossy Smoke	22121 4327	22121 4330
		Matte White – 9010	Glossy Bronze	22121 4627	22121 4630
		Matte White – 9010	Gold	22121 5027	22121 5030
		Matte White – 9010	Rose Gold	22121 5527	22121 5530

LED and driver included

Net weight: 8.90 kg

Parcels: 15



IP20

Energy Saving

Dim Triac

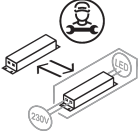


Energy efficiency class

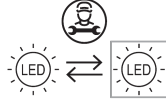
## D

## Ecodesign Regulation

The LED driver contained in this fixture must only be replaced by the manufacturer, its support service or similarly qualified personnel.



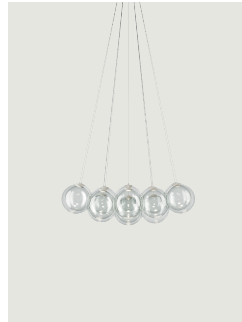
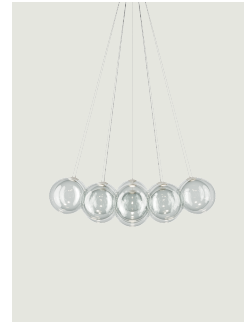
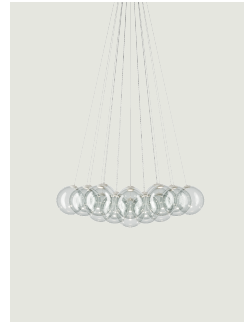
The LED-only light source contained in this fixture must only be replaced by the manufacturer, its support service or similarly qualified personnel.



## Options of Random Cloud



Random Cloud 7 Lights Ø28

Random Cloud 14 Lights  
Ø23Random Cloud 14 Lights  
Ø28Random Cloud 19 Lights  
Ø23