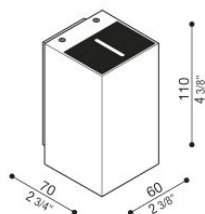


Trend U&D 60 Blade

LL1291142

Lombardo.



Technical information:

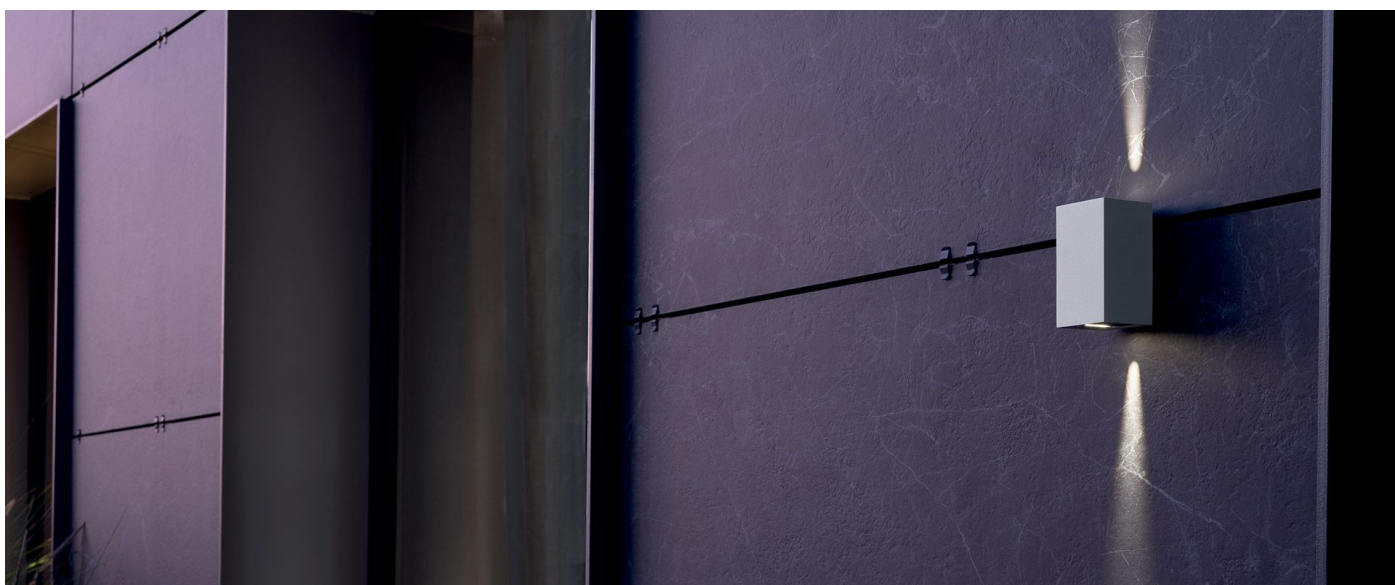
| | |
|------------------------------------|-----------------------------|
| Installation: | Wall, Surface mounting wall |
| Material: | Aluminium |
| Finish: | Grey anthracite RAL 7021 |
| Treatment: | Sea Treatment |
| Diffuser type: | Serigraphed glass |
| Lamp type: | LED |
| Energy performance class: | E |
| Colour temperature: | 2700K |
| CRI: | >80 |
| LB Factor: | L80B20 - 50.000h |
| Photobiological risk: | RG1 |
| Power consumption (Watt): | 6 |
| Lumen: | 1000 |
| Real Lumen: | 270-280 |
| Power supply: | ☑ integrated |
| LED: | 220-240 V |
| Circuit breaker | 45-56-66-82 |
| | B10 - C10 - B16 - C16 |
| Insulation class: | ⊕ CL.I |
| Type of protection: | IP 66 |
| Resistance to breakage: | IK 07 2J xx5 |
| Standards and Marks of Conformity: | CE UK EA |



Trend U&D 60 Blade

LL1291142

Lombardo.



Trend U&D 60 Blade

Lombardo.

LL1291142

Lighting simulation:



trend_60_ued_blade