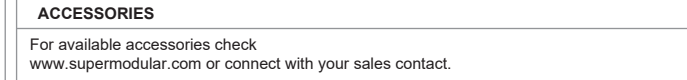
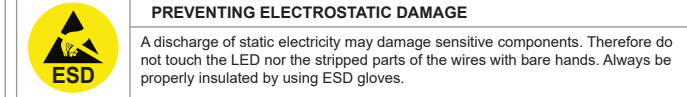
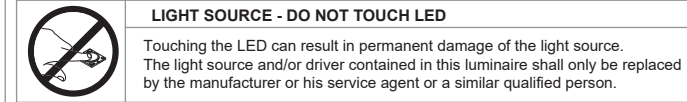
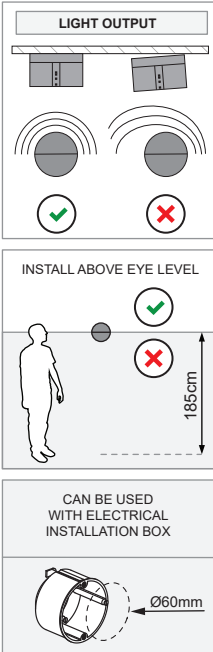
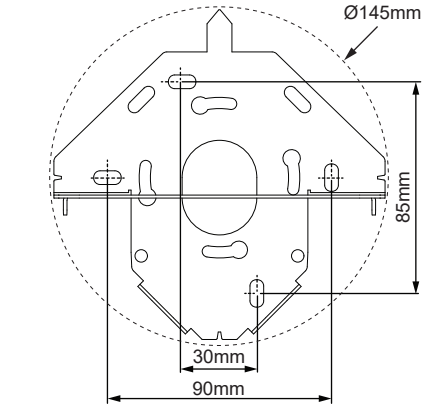
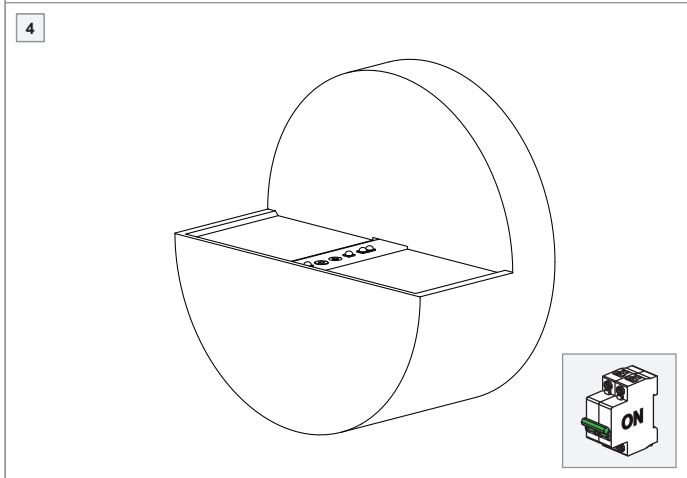
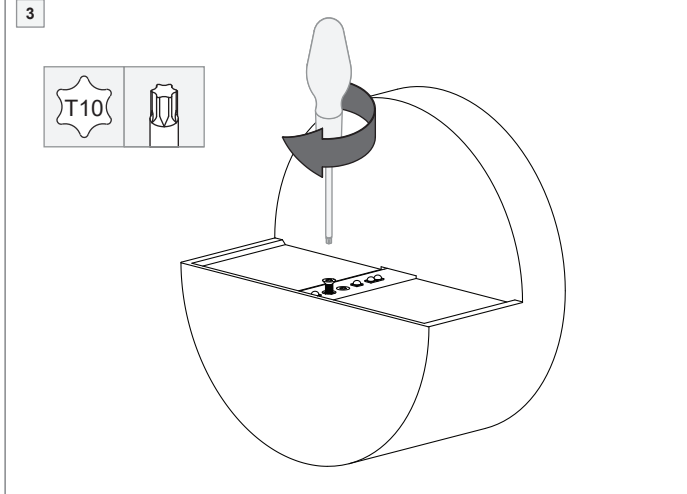
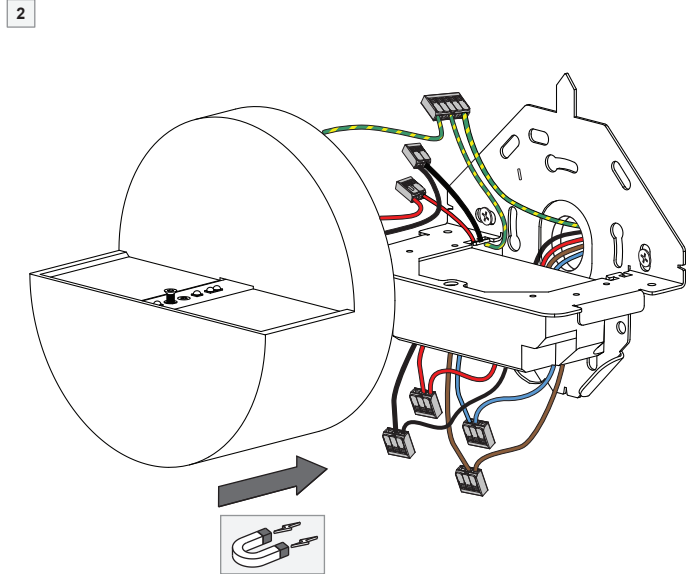
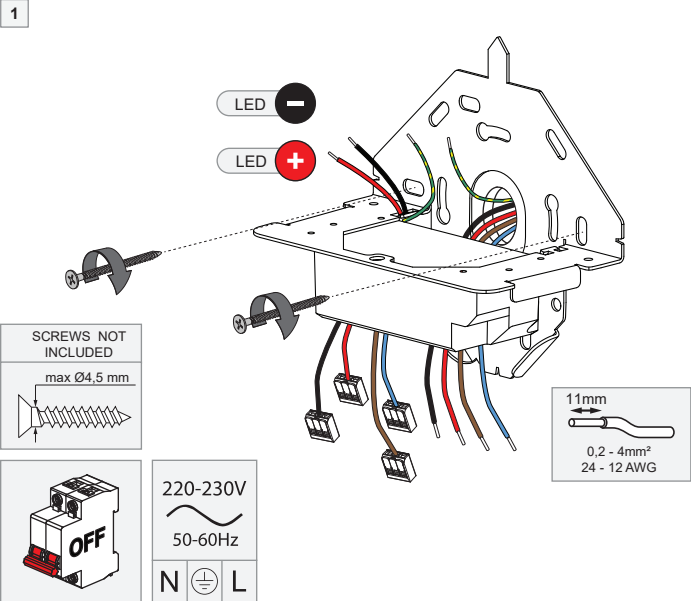


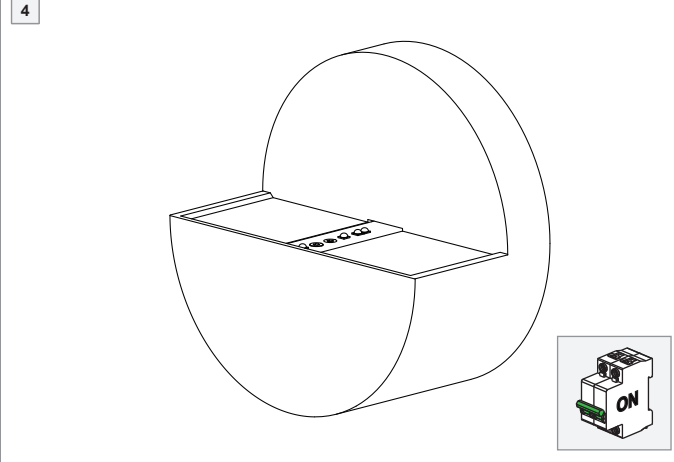
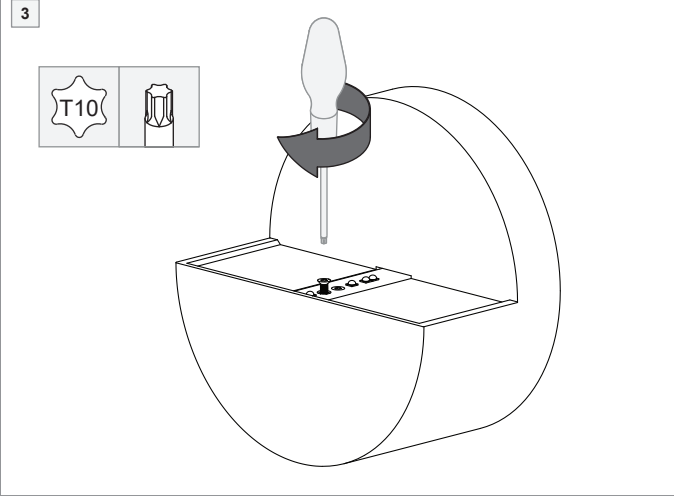
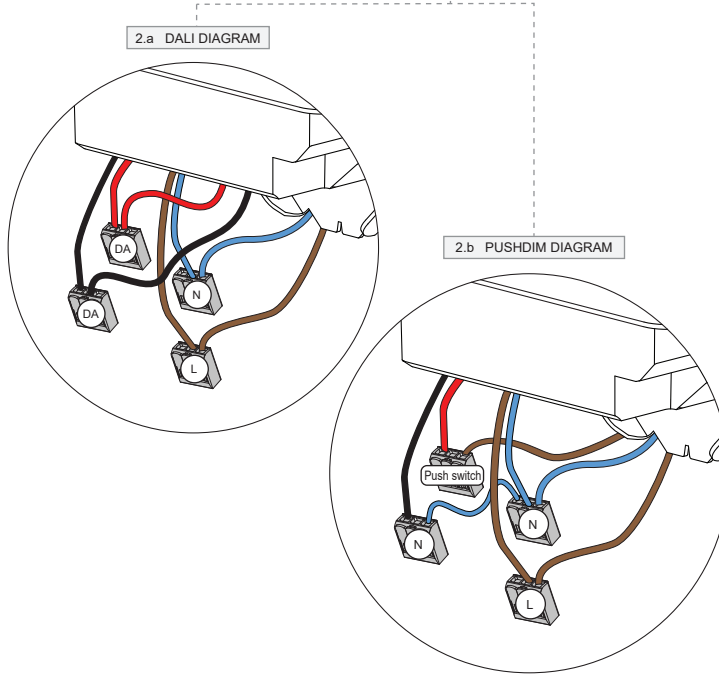
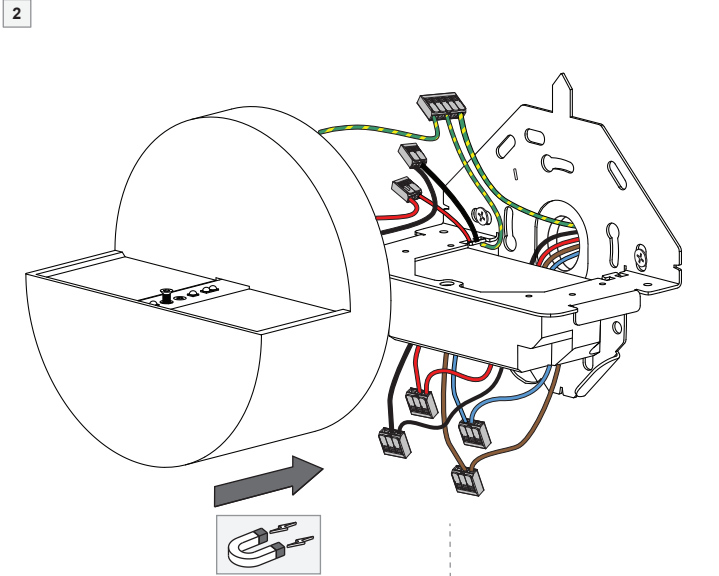
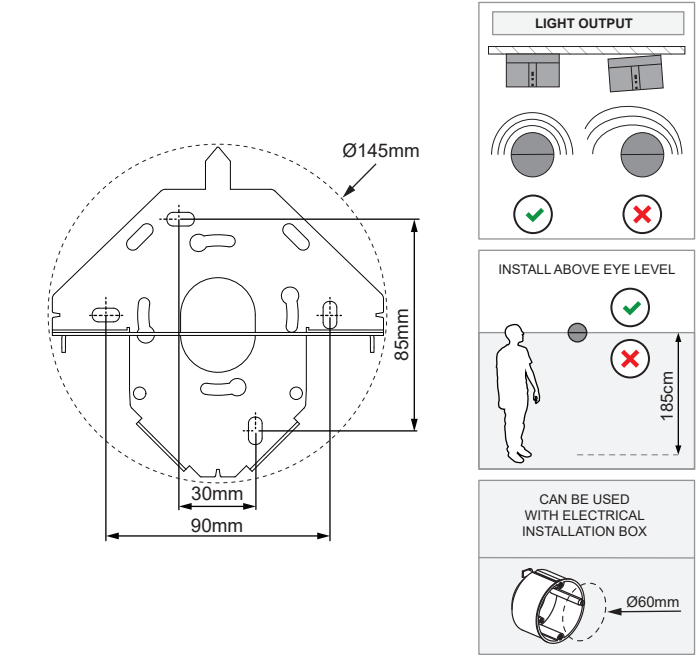
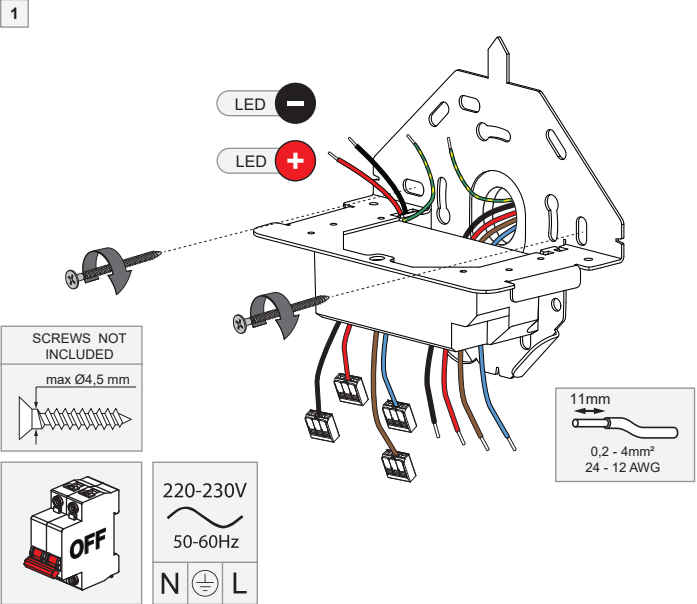
Impulse Round Wall 1x LED 1-10V DI

137704XX_137705XX



Impulse Round Wall 1x LED DALI/Push-Dim DI

137702XX_137703XX



LIGHT SOURCE - DO NOT TOUCH LED

Touching the LED can result in permanent damage of the light source. The light source and/or driver contained in this luminaire shall only be replaced by the manufacturer or his service agent or a similar qualified person.

PREVENTING ELECTROSTATIC DAMAGE

A discharge of static electricity may damage sensitive components. Therefore do not touch the LED nor the stripped parts of the wires with bare hands. Always be properly insulated by using ESD gloves.

ACCESSORIES

For available accessories check www.supermodular.com or connect with your sales contact.

Impulse Round Wall 1x LED Trailing Edge DI

137700XX_137701XX

1

LED -

LED +

SCREWS NOT INCLUDED

max Ø4,5 mm

220-230V

50-60Hz

N L

11mm

0,2 - 4mm²

24 - 12 AWG

LIGHT OUTPUT

✓

✗

INSTALL ABOVE EYE LEVEL

✓

✗

185cm

CAN BE USED WITH ELECTRICAL INSTALLATION BOX

Ø60mm

Ø145mm

85mm

30mm

90mm

2

3

T10

⚡

⚡

LIGHT SOURCE - DO NOT TOUCH LED

Touching the LED can result in permanent damage of the light source. The light source and/or driver contained in this luminaire shall only be replaced by the manufacturer or his service agent or a similar qualified person.

⚡

⚡

PREVENTING ELECTROSTATIC DAMAGE

A discharge of static electricity may damage sensitive components. Therefore do not touch the LED nor the stripped parts of the wires with bare hands. Always be properly insulated by using ESD gloves.

ACCESSORIES

For available accessories check www.supermodular.com or connect with your sales contact.

02 - 22/01/2024

⏏

220-230V

50-60Hz

⚡

R,C

↔

IP 20

🏠

⚡

UK

CA

CE