

IC Lights Table 2

Designed by Michael Anastassiades, 2014

Halogen - 205W



Table lamp providing diffused light. Frame in brass, brushed and transparent varnished or chrome steel. Blown glass opal diffuser. Dimmer on the power chord.

Are you a professional and your project needs consulting and support?

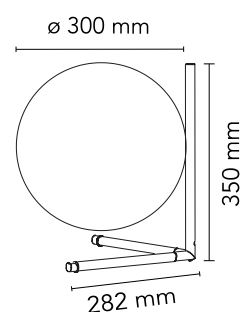
BOOK AN APPOINTMENT

Main specifications

EAN	8059607002926
Mounting	Table
Environments	Indoor dry location
Light Source Type	Bulb
Lamp category	Halogen
Lamp holders	E27
Ilcos	HSGS
Number of heads	1
Power (W)	205

Physical

Colour	Chrome
Net weight (kg)	2.35
Package volume (m3)	0.07
IP internal	20



Download

Mounting instructions	↓ PDF
Spare Parts	↓ PDF

Photometric Files

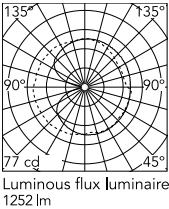
LDT / IES	↓ LDT
-----------	-------

Technical Drawings

2D	↓ ZIP
3D	↓ ZIP
Bim	↓ ZIP



Schematic light drawing



Photometric

Lighting type	Total
Light distribution	Asymmetric

Electrical

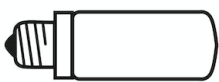
Insulation class	II
Frequency (Hz)	50/60
Main voltage (Vac)	220-240
LED voltage Vf (Vdc)	null
Dimmable	Yes
Dimming interface	Dimmer Integrated
Plug type	Type C
Batteries inside	No
Charging min time	No

Bulbs



NOT INCLUDED

RF26259
LED Lamp 18W E27 2700K
Dimmable



NOT INCLUDED

RF26258
LED Lamp 18W E27 3000K T38
Dimmable



NOT INCLUDED

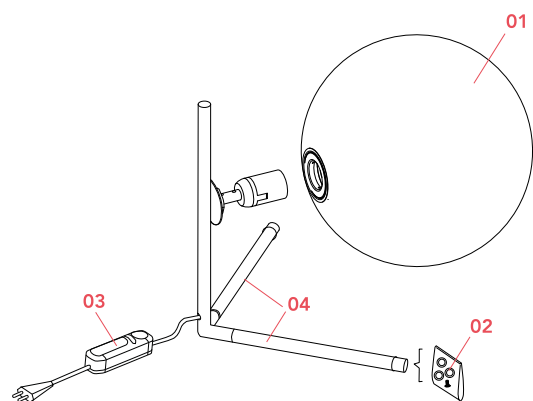
RF32288
LED Lamp E27 15W 2700K T38



NOT INCLUDED

RF32289
LED Lamp E27 15W 3000K T38

Spare Parts



- | | | |
|-----|---|-----------|
| 01. | IC Lights 2 diffuser for chrome version | F3137057 |
| 02. | Gasket and foot kit | RF3160500 |
| 04. | Lower chrome leg | RF23815 |

DOWNLOAD



F3137057

IC Lights 2 diffuser for chrome
version



RF3160500

Gasket and foot kit



RF23815

Lower chrome leg